



AUSTRALIAN WINE AND GRAPE INDUSTRY

EMBARGO: 11.30AM (CANBERRA TIME) THURS 29 JAN 2009

CONTENTS

	<i>page</i>
Notes	2
Summary of findings	3
List of tables	12

TABLES

Viticulture	14
Vineyard irrigation	28
Wine production and grapes crushed	30
Wine inventories	33
Brandy and grape spirit	34
Domestic wine sales	35
International trade	36
Grape and wine prices	43
Wine consumption	43
Wine expenditure	44
World comparisons	45

ADDITIONAL INFORMATION

Explanatory Notes	49
Glossary	53
Bibliography	54

INQUIRIES

For further information about these and related statistics, contact the National Information and Referral Service on 1300 135 070 or Paul Sutcliffe on Adelaide (08) 8237 7302.

NOTES

ABOUT THIS PUBLICATION This publication presents a summary of statistics on grape and wine production and related activities collected by the Australian Bureau of Statistics (ABS) and from other sources.

SOURCE MATERIAL With the exception of the tables and graphs relating to world comparisons, all sources cited refer to ABS publications and/or ABS data available on request.

ACKNOWLEDGMENT The continuing collection of varietal data is supported by Australia's grape-growers and winemakers and the Australian government through the Grape and Wine Research and Development Corporation.

ROUNDING Where figures have been rounded, discrepancies may occur between sums of the component items and totals.



ABBREVIATIONS

- \$b billion (thousand million) dollars
- \$m million dollars
- ABS Australian Bureau of Statistics
- ACT Australian Capital Territory
- Aust. Australia
- cat. no. Catalogue number
- ha hectare
- L litre
- L al litres of alcohol
- ML megalitre
- n.f.d. not further defined
- nec not elsewhere classified
- NSW New South Wales
- NT Northern Territory
- Qld Queensland
- SA South Australia
- t tonne
- Tas. Tasmania
- Vic. Victoria
- WA Western Australia

Brian Pink
Australian Statistician

SUMMARY OF FINDINGS

INTRODUCTION

There were 1.8 million tonnes of grapes crushed last year, an increase of 0.4 million tonnes (31.1%) on the previous year. This was achieved on an area of grape bearing vines that rose 1.4% to 166 thousand hectares this year from 164 thousand hectares last year. Yields rose 26.9% from 9.3 tonnes per hectare last year to 11.8 tonnes per hectare this year.

Beverage wine production also showed an increase, rising 28.5% to 1.3 billion litres. In contrast exports of Australian produced wine fell 9.2% to 715 million litres and domestic sales of Australian wine also dropped by 4.8% to 426 million litres. The result of these movements was an increase in inventory values of 5% from 1.8 billion litres last year to 1.9 billion litres this year. Imports of wine into Australia also rose this year by 55.6% to 53 million litres.

WINE AND GRAPE INDUSTRY—2007–08

	Value	% change from 2006–07
Area of bearing vines (ha)	166 197	1.4
Total grape production (t)	1 956 794	27.9
Fresh grapes crushed (t)	1 831 523	31.1
Beverage wine production (million L)	1 257.4	28.5
Beverage wine inventories (million L)	1 872.4	5.0
Domestic sales of Australian wine (million L)	426.4	-4.8
Domestic sales value of Australian wine (\$m)	2 096.2	4.6
Exports of Australian wine (million L)	714.7	-9.2
Exports of Australian wine (\$m)	2 680.4	-6.9
Imports of wine (million L)	53.3	55.6
Imports of wine (\$m)	431.4	40.8

Source: Sales of Australian Wine and Brandy by Winemakers (cat. no. 8504.0), ABS data available on request, Wine Statistics Survey, Wine and Spirit Production Survey, Inventories of Australian Wine and Brandy, Vineyards Survey.

AREA OF VINES

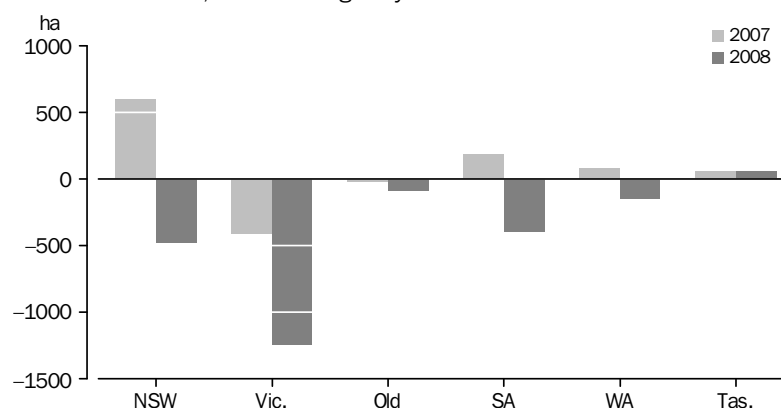
The area of vines being cultivated this season was 173 thousand hectares which was 0.6% lower than last year. The total area of grape bearing vines was 166 thousand hectares compared to 164 thousand hectares last year. The area of vines not bearing grapes was reduced by 34.1% to 6.5 thousand hectares this season.

The net decrease in area planted under vines this year (derived from existing vines, vines planted, and vines lost during the year) was two thousand hectares, a significant change from the 500 hectares that were added last year.

SUMMARY OF FINDINGS *continued*

AREA OF VINES *continued*

VINE PLANTING, Net change by state



Source: ABS data available on request, Vineyards Survey

VINEYARD IRRIGATION

There were seven thousand vineyards that irrigated this season, 88.3% of the eight thousand vineyards in Australia. The area of grapevines irrigated was 162 thousand hectares, with South Australia's seventy thousand hectares accounting for 43.2%. Along with New South Wales (41 thousand hectares) and Victoria (35 thousand hectares) the three main grape growing states have 90% of vineyards using irrigation. The average usage of water was 3.2 megalitres per hectare. South Australia's average was 2.7 megalitres per hectare, with New South Wales having an average of 3.8 megalitres per hectare and Victoria averaging the highest level at 4.1 megalitres per hectare.

The most common watering method continues to be drip or micro spray with 131 thousand hectares, or 81.0% of the total irrigated area watered using this method. In all States the predominant watering method is drip or micro spray. However, the proportion of area irrigated by spray excluding micro spray methods in Victoria (25.4%) and the use of watering by furrow or flood in New South Wales (16.8%) are still significant.

Surface water from either state owned or private irrigation schemes was the most common source of water used by vineyards in Australia. There were 367 thousand megalitres drawn from this source. New South Wales (123 thousand megalitres), Victoria (118 thousand megalitres) and South Australia (111 thousand megalitres) collectively have 96.1% of the water sourced from state owned or private irrigation schemes. Nationally, the next most important water source for vineyards was underground water supply (75 thousand megalitres), followed by other surface water (46 thousand megalitres).

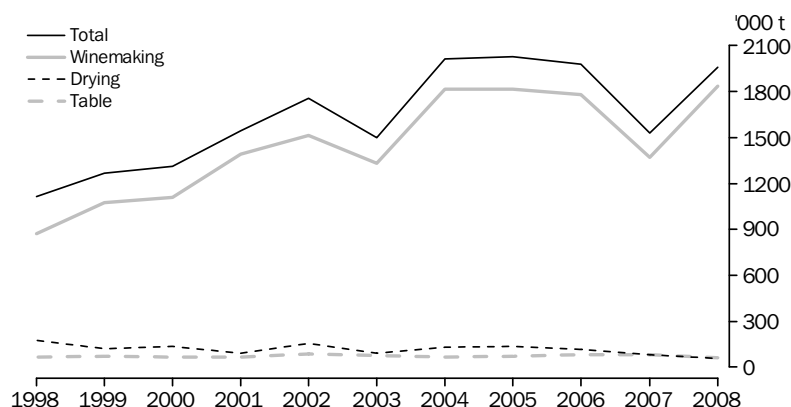
SUMMARY OF FINDINGS *continued*

GRAPE PRODUCTION

The weight of grapes harvested this season was two million tonnes which was a 27.9% increase on last season. The production of white grapes was 933 thousand tonnes, a 14.3% increase on the tonnage harvested last year, representing 47.7% of the total grapes harvested. Red grape production had a significant increase, up 43.4% to one million tonnes, accounting for 72.6% of the increase in this years production.

There were 1.8 million tonnes of grapes harvested for winemaking, an increase of 34.0% on the 1.4 million tonnes harvested last season. The production of grapes for drying decreased further from last year by 30.7% to 56 thousand tonnes. Production of table and other grapes harvested decreased 19.2% to 64 thousand tonnes.

GRAPE PRODUCTION AND INTENDED USAGE



Source: ABS data available on request, Vineyards Survey.

WINEMAKING LOCATIONS AND GRAPES CRUSHED

For the 2008 vintage there were 384 winery locations around Australia each crushing 50 tonnes or more of grapes, owned by 342 winemaking businesses. This compares with the previous years vintage where 385 locations crushing 50 tonnes or more were owned by 344 winemaking businesses. There were 1.8 million tonnes of grapes crushed, an increase of 434 thousand tonnes (31.1%) from last year.

A third of all winemaking locations were in South Australia, accounting for 45.3% of the national wine grape crush. This is a rise from last year where South Australia had 43.3% of the total. New South Wales/Australian Capital Territory had 22.9% of the total number of locations and 34.4% of the total wine crush, followed by Victoria (22.7% of all locations and 16.3% of all grapes crushed) and Western Australia (18.2% of locations and 3.4% of the grape crush).

When looking at crush capacity the 342 winemaking businesses were diverse in size. There were 174 businesses that each crushed from 50 to 400 tonnes of grapes, producing a combined crush of 33 thousand tonnes (1.8% of the total crush).

The 168 winemaking businesses that each crushed more than 400 tonnes of grapes crushed 98.2% of the national total. There were 14 winemakers that crushed more than twenty thousand tonnes each, accounting for a total of 1.3 million tonnes of grapes or 70.5% of the total crush. These 14 businesses averaged 92 thousand tonnes each.

SUMMARY OF FINDINGS *continued*

BEVERAGE WINE PRODUCTION

There were 1.3 billion litres of beverage wine produced by winemakers that crushed more than 50 tonnes of grapes. This beverage wine production figure was 0.3 billion litres (28.5%) more than the total for last year.

Red/rosé wine made up 675 million litres (53.7%) and white wine 567 million litres (45.1%) of the beverage wine produced this season.

BEVERAGE WINE PRODUCTION



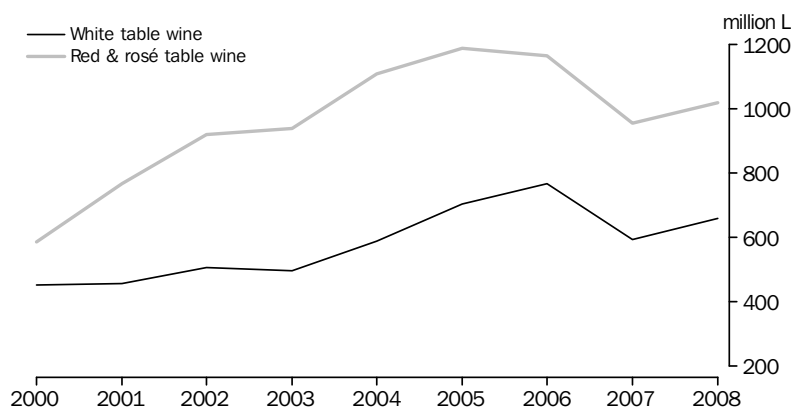
Source: ABS data available on request, *Wine and Spirit Production Survey*.

WINE INVENTORIES

Inventories of Australian beverage wine held by winemakers increased this year to 1.9 billion litres at 30 June 2008. This was a 5.0% increase on last years end of financial year figure. Table wine inventories rose 8.4% to 1.7 billion litres as at 30 June 2008.

White table wine accounted for 661 million litres or 35.3% of the stock of total beverage wine stored by winemakers this year. Red/rosé table wine stocks of one billion litres still represented 54.4% of the beverage wine stock held by winemakers.

INVENTORIES OF AUSTRALIAN TABLE WINE—At 30 June



Source: ABS data available on request, *Inventories of Australian Wine and Brandy Survey*.

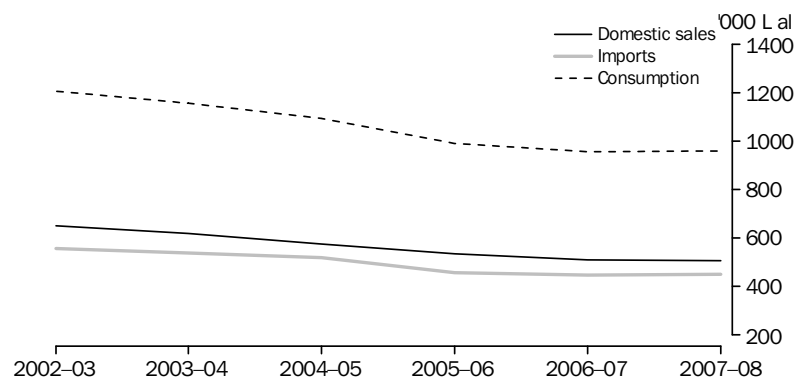
SUMMARY OF FINDINGS *continued*

BRANDY

The domestic sales of Australian brandy of 508 thousand litres of alcohol were similar to last years sales. This follows the downward trend in domestic sales over the past six years, during which sales of Australian brandy have fallen 27.5% in total.

The volume of imported brandy cleared for home consumption steadied at 452 thousand litres of alcohol. Exports of Australian brandy fell to 4 thousand litres of alcohol.

DOMESTIC SALES, IMPORTS AND CONSUMPTION (a) OF BRANDY



(a) Available for consumption in Australia - Domestic sales plus Imports.

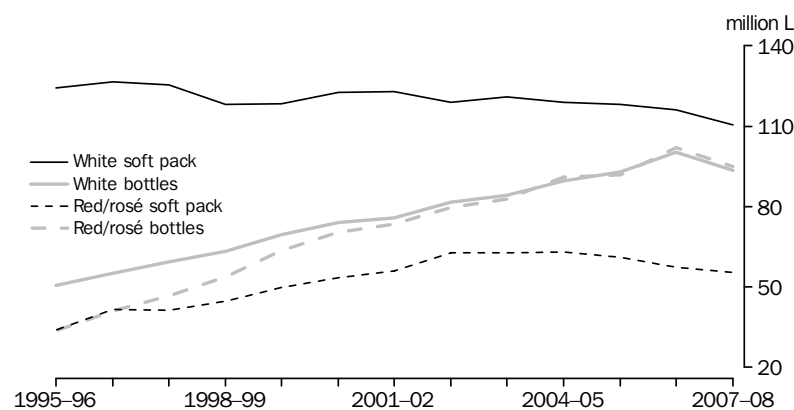
Source: Sales of Australian Wine and Brandy by Winemakers (cat. no. 8504.0).

DOMESTIC WINE SALES

Domestic sales of Australian wine last year were 426 million litres, a decrease of 4.8% on the previous year's total of 448 million litres. In terms of volume, red table wine decreased 4.6% to 155 million litres, white table wine fell 5.5% to 206 million litres and fortified wines fell 1.1% to 17 million litres.

The fall in domestic sales was most evident in sales of wine in glass bottles less than two litres followed by sales of wine in soft packs. Sales of wine in glass bottles fell 6.8% to 188 million litres, while sales of wine in soft packs fell 4.5% to 166 million litres. This was consistent across both red/rosé wine and white wine for both of these container types. In contrast sales of wine in other containers rose significantly, accounting for seven million litres of total sales, up 45% from 5 million litres last year. Three quarters of this was represented by red/rosé wine sales.

DOMESTIC SALES OF AUSTRALIAN RED AND WHITE TABLE WINE



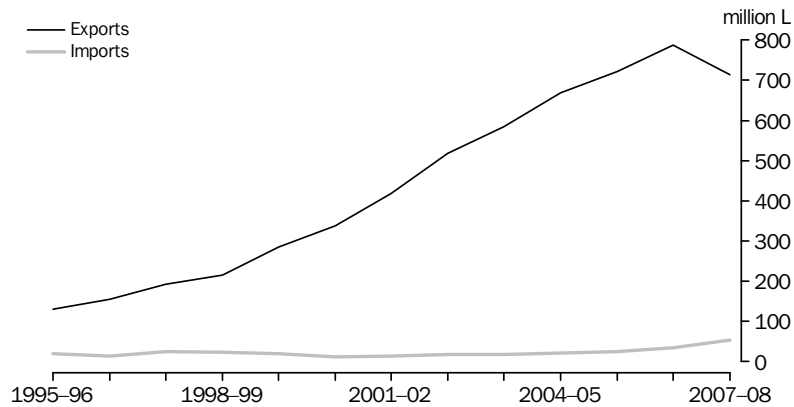
Source: Sales of Australian Wine and Brandy by Winemakers (cat. no. 8504.0).

SUMMARY OF FINDINGS *continued*

WINE EXPORTS

Australian wine exports dropped last year with 715 million litres of wine exported to world markets, a fall of 9.2% on last year. The value of these exports fell by 198 million dollars or 6.9% to 2.7 billion dollars. However, the average price per litre rose 2.6% from \$3.66 last year to \$3.75 this year. For the 2007-08 period Australia imported 53 million litres of wine, significantly less than the volume exported.

EXPORTS OF AUSTRALIAN WINE AND IMPORTS OF WINE



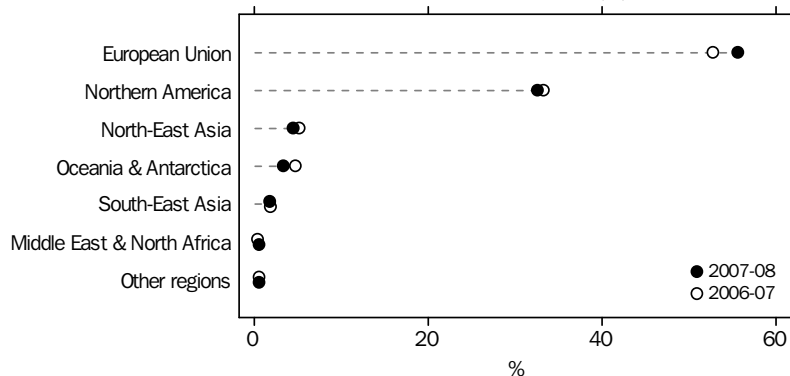
Source: ABS data available on request, International Trade database.

DESTINATION OF AUSTRALIAN WINE EXPORTS

The European Union continued to be the major destination region for Australian wine exports last year. It accounted for 398 million litres (55.6% of total wine exports by volume), valued at 1.3 billion dollars (47.2% of total wine exports by value). Exports to Northern America accounted for 233 million litres (32.6%) and were valued at 997 million dollars (37.2%).

The United Kingdom was the major destination country for Australian wine, importing more 268 million litres (37.5%) of all Australian wine exported last year. The volume of wine exported to the United Kingdom was valued at 895 million dollars. The United States of America imported 185 million litres or 733 million dollars worth of Australian wine last year.

DESTINATION OF AUSTRALIAN WINE EXPORTS (a)



(a) Proportion of total wine exports, by volume.

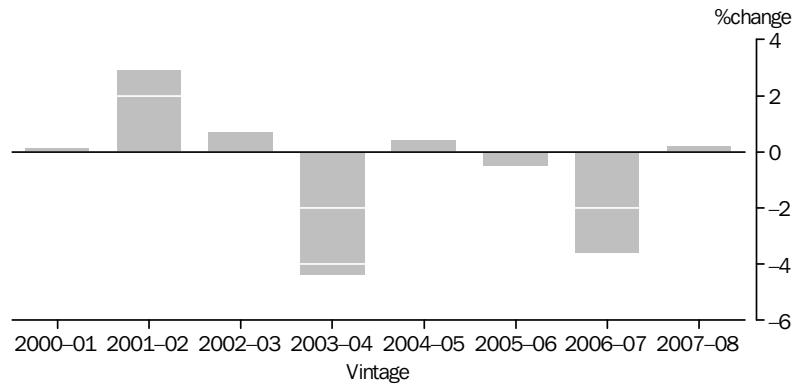
Source: ABS data available on request, International Trade database.

SUMMARY OF FINDINGS *continued*

GRAPE AND WINE PRICES

The movement in price received for wine was 0.2%, rising into positive figures from last years value of minus 3.6%. The price of wine increased on average by 1.4% last year according to the consumer price index for wine, after decreasing by 0.6% last year. In comparison the annual All groups consumer price index was 3.4% this year, rising from 2.9% last year.

INDEX OF SALES PRICES RECEIVED BY WINE MANUFACTURERS, Change on previous vintage

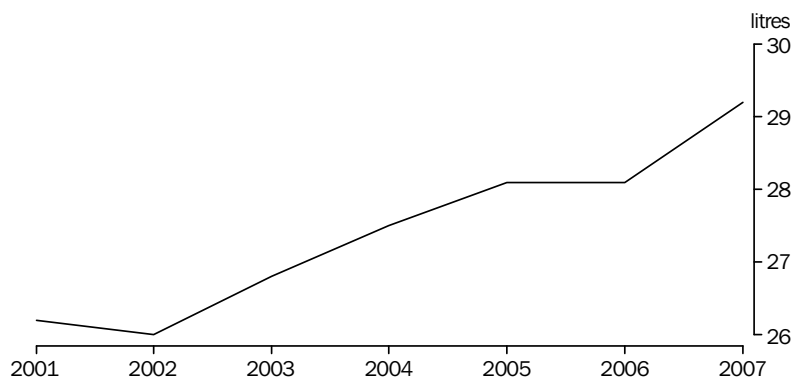


Source: ABS data available on request, *Price Indexes of Materials used in Manufacturing Industries*.

WINE CONSUMPTION

The apparent per capita consumption of wine by persons aged 15 years and over increased by 3.9% in 2007 to 29 litres per person per year from 28 litres per person per year in 2006. When converted to account for alcoholic content, the apparent per person consumption of wine alcohol remained at 3.1 litres per person per year for 2007.

PER CAPITA CONSUMPTION OF WINE (a)



(a) Apparent consumption of wine by persons aged 15 years and over.

Source: *Apparent Consumption of Alcohol, Australia (cat. no. 4307.0.55.001)*.

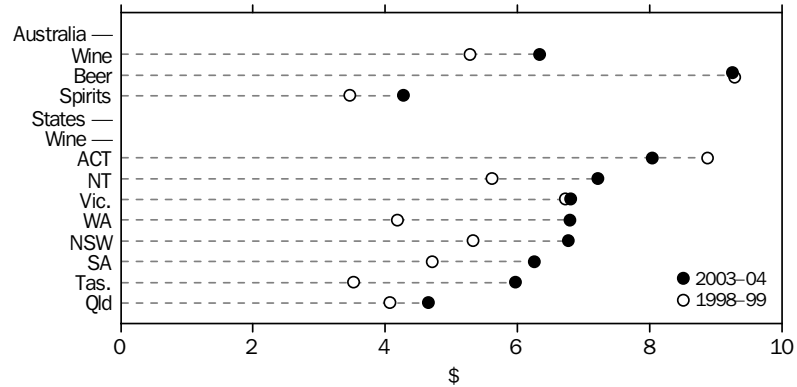
HOUSEHOLD EXPENDITURE

The most current details of household expenditure show that during 2003-04 Australian households spent an average of \$6.33 per week on wine. Households in the Australian Capital Territory spent the most with \$8.04 and those in Queensland the least with \$4.65. Australian Capital Territory households spent the highest proportion of their total weekly alcohol expenditure on wine (32.9%), while Northern Territory households spent the lowest (19.2%). Households in New South Wales (28.9%), Victoria (28.7%) and South Australia (27.8%) spent more than one quarter of their total weekly alcohol expenditure on wine.

SUMMARY OF FINDINGS *continued*

HOUSEHOLD EXPENDITURE *continued*

AVERAGE WEEKLY HOUSEHOLD EXPENDITURE, Alcoholic beverages

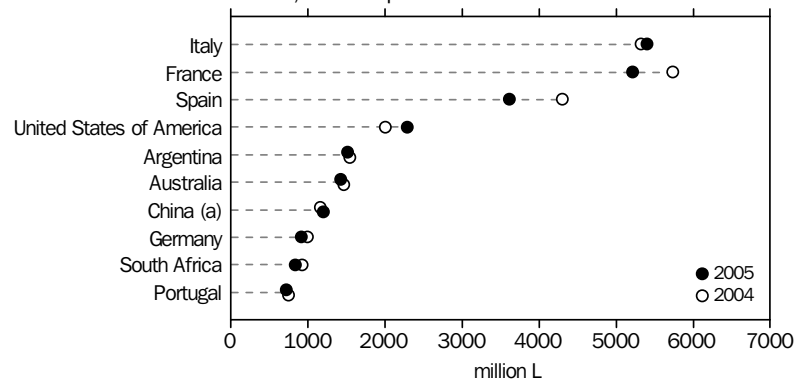


Source: Household Expenditure Survey, Australia: Detailed Expenditure Items, 2003-04 (cat. no. 6535.0.55.001).

WORLD COMPARISONS

Of the countries for which 2005 data are available, Australia was the tenth largest producer of grapes. Australia produced 2.0 million tonnes compared to Italy (8.6 million tonnes), United States of America (7.1 million tonnes) and France (6.8 million tonnes). The area of vines planted in Australia (167 thousand hectares) was the thirteenth highest. Spain (1.2 million hectares), France (894 thousand hectares) and Italy (842 thousand hectares) had the greatest areas under vine. The Australian yield (12.1 tonnes per hectare) was higher than the world average yield of 8.5 tonnes per hectare.

PRODUCTION OF WINE, Principal countries



(a) Excludes SARs and Taiwan

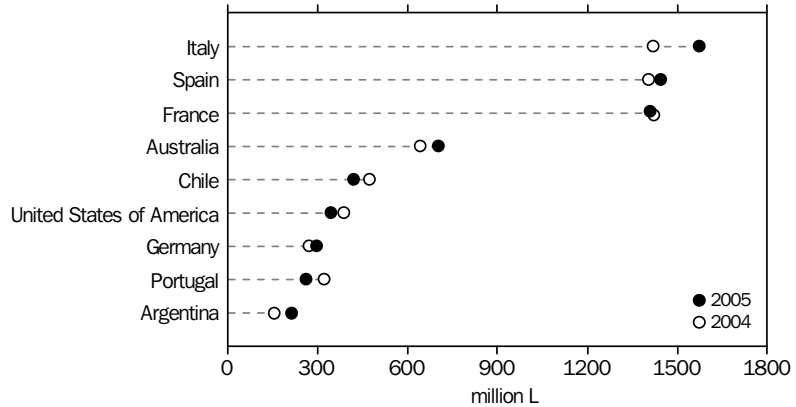
Source: Office International de la Vigne et du Vin (O.I.V.) 2008.

Italy (5.4 billion litres), France (5.2 billion litres), and Spain (3.6 billion litres) were the largest producers of wine. In 2005 Australia produced 1.4 billion litres of wine and was ranked sixth in the world for wine production. This volume of wine meant that Australia was responsible for 5.1% of all the wine produced in the world. Italy (the world's largest wine producer) was responsible for 19.1% of the world's wine.

SUMMARY OF FINDINGS *continued*

WORLD COMPARISONS
continued

EXPORTS OF WINE, Principal countries



Source: Office International de la Vigne et du Vin (O.I.V.) 2008.

Australia, with 702 million litres of wine exported, was ranked the fourth largest exporter of wine. The top three countries exporting the largest volumes of wine in 2005 were Italy (1.6 billion litres), Spain (1.4 billion litres) and France (1.4 billion litres). The top three countries accounted for 55.5% of total world wine exports. Australia exported 49.1% of its wine production, which was the highest proportion when compared to the other leading wine producing countries.

Australia's per capita consumption of wine was 22 litres in 2005, well below the leading countries of France (55 litres) and Italy (47 litres).

LIST OF TABLES

page

VITICULTURE

1	Area of vines, By state, 2004 to 2008	14
2	Production of grapes, By state, 2004 to 2008	15
3	Area of vines by grape variety, At harvest, 2008	16
4	Production and yield of grape varieties, At harvest, 2008	17
5	Area of vines, Gains and losses by variety, 2008	18
6	Area of vines, Gains and losses by state, 2008	19
7	Area of vines, By Australian Geographical Indications, 2008	20
8	Production of grapes, By Australian Geographical Indications, 2008	24

VINEYARD IRRIGATION

9	Irrigation of grapevines, By state, 2008	28
10	Watering method used, By state, 2008	28
11	Sources of water, By state, 2008	29

WINE PRODUCTION AND GRAPES CRUSHED

12	Size of grape crush and number of wineries, State and territory, 2007-08	30
13	Winemakers, Size of production, 2007-08	30
14	Wine production, 2003-04 to 2007-08	31
15	Wine production, By state, 2003-04 to 2007-08	31
16	Grape crush, 2005-06 to 2007-08	32
17	Grape spirit used in current vintage wine, 2003-04 to 2007-08	33

WINE INVENTORIES

18	Inventories of Australian wine and grape juice held by winemakers, 2004 to 2008	33
-----------	--	----

BRANDY AND GRAPE SPIRIT

19	Inventories of Australian brandy and grape spirit, 2004 to 2008	34
20	Domestic sales, exports and imports of brandy, 2002-03 to 2007-08	34

DOMESTIC WINE SALES

21	Domestic sales of Australian wine by winemakers, 1995-96 to 2007-08	35
22	Domestic sales and domestic sales value of Australian wine, 2002-03 to 2007-08	35
23	Domestic sales of Australian table wine, By container type, 1995-96 to 2007-08	36

INTERNATIONAL TRADE

24	Exports of Australian wine, 1994-95 to 2007-08	36
25	Disposals of Australian-produced wine, 1994-95 to 2007-08	37
26	Exports of Australian wine, By destination, 2007-08	38
27	Exports of Australian wine, By state and territory of origin, 1994-95 to 2007-08	39

LIST OF TABLES *continued*

page

INTERNATIONAL TRADE *continued*

28	Wine imports cleared for home consumption, By wine type, 1994–95 to 2007–08	40
29	Wine imports cleared for home consumption, By country of origin, 2005–06 to 2007–08	40
30	Exports and imports cleared of fresh and dried grapes, 1995–96 to 2007–08	41
31	Exports and imports of fresh and dried grapes, By country, 2005–06 to 2007–08	42

GRAPE AND WINE PRICES

32	Selected price indexes, Percentage change, 1998–99 to 2007–08	43
-----------	---	----

WINE CONSUMPTION

33	Wine available for consumption in Australia, 1998–99 to 2007–08	43
34	Apparent consumption of alcohol per capita, 2001 to 2007	44

WINE EXPENDITURE

35	Average Weekly Household Expenditure, Alcoholic Beverages, 2003–04	44
-----------	---	----

WORLD COMPARISONS

36	Grape production, Area of vines and yield of selected countries, 2005	45
37	Wine production, exports and consumption, Selected countries, 2005	46
38	Production and exports of table and dried grapes, Selected countries, 2005	47
39	Imports of wine, table and dried grapes, Selected countries, 2005	48

AREA OF VINES, By state–2004 to 2008

	NOT YET BEARING (PLANTED OR GRAFTED)			
	Bearing	Prior to	During	Total
		collection	collection	
ha	year	year	ha	ha
New South Wales				
2004	35 975	1 841	1 221	39 036
2005	35 777	2 118	1 383	39 278
2006	36 632	2 235	1 331	40 198
2007	40 672	1 821	1 235	43 728
2008	41 958	1 185	432	43 574
Victoria				
2004	34 929	1 775	1 825	38 529
2005	35 049	2 219	1 496	38 764
2006	36 597	1 537	846	38 980
2007	36 746	1 296	608	38 650
2008	36 094	831	547	37 472
Queensland				
2004	2 150	218	195	2 562
2005	2 307	157	92	2 556
2006	2 449	147	17	2 613
2007	2 925	75	96	3 095
2008	3 090	36	51	3 176
South Australia				
2004	64 961	3 202	2 149	70 312
2005	66 979	2 254	2 180	71 413
2006	69 771	2 130	1 187	73 088
2007	69 860	2 291	1 257	73 407
2008	70 757	1 510	887	73 155
Western Australia				
2004	11 068	659	357	12 085
2005	11 747	477	747	12 971
2006	11 375	531	370	12 276
2007	12 200	475	416	13 091
2008	12 746	503	183	13 431
Tasmania				
2004	1 048	85	72	1 206
2005	981	94	194	1 269
2006	999	150	105	1 254
2007	1 196	166	72	1 434
2008	1 224	192	91	1 507
Australia^(a)				
2004	150 561	7 800	5 819	164 181
2005	153 204	7 369	6 093	166 665
2006	158 167	6 768	3 856	168 791
2007	163 951	6 141	3 684	173 776
2008	166 197	4 289	2 190	172 676

(a) Includes Australian Capital Territory (ACT) and Northern Territory (NT).

Source: ABS data on request, Vineyards Survey 2008.

PRODUCTION OF GRAPES, By state—2004 to 2008

GRAPE PRODUCTION(a)

	Winemaking(b)	Drying	Table and other	Total	Area of bearing vines	Yield(c)
	t	t	t	t	ha	t/ha
New South Wales						
2004	450 516	19 748	12 299	482 563	35 975	13.4
2005	475 974	21 332	10 980	508 286	35 777	14.2
2006	473 580	17 996	18 327	509 903	36 632	13.9
2007	402 777	13 619	12 399	428 795	40 672	10.5
2008	535 989	8 742	9 679	554 410	41 958	13.2
Victoria						
2004	384 896	104 860	42 495	532 251	34 929	15.2
2005	392 963	109 544	48 707	551 214	35 049	15.7
2006	354 796	96 623	45 755	497 174	36 597	13.6
2007	308 501	65 552	45 441	419 494	36 746	11.4
2008	394 551	45 677	36 614	476 842	36 094	13.2
Queensland						
2004	5 162	68	7 283	12 513	2 150	5.8
2005	6 689	136	5 325	12 149	2 307	5.3
2006	4 764	—	10 301	15 064	2 449	6.2
2007	2 205	175	14 415	16 795	2 925	5.7
2008	3 307	69	11 237	14 612	3 090	4.7
South Australia						
2004	880 075	3 822	2 101	885 999	64 961	13.6
2005	856 038	3 343	2 137	861 518	66 979	12.9
2006	881 346	2 847	1 621	885 814	69 771	12.7
2007	583 340	1 554	1 094	585 988	69 860	8.4
2008	809 113	1 472	930	811 515	70 757	11.5
Western Australia						
2004	87 523	991	3 556	92 070	11 068	8.3
2005	79 948	1 058	4 046	85 052	11 747	7.2
2006	60 840	354	4 163	65 357	11 375	5.7
2007	68 252	122	4 050	72 424	12 200	5.9
2008	82 197	179	4 045	86 421	12 746	6.8
Tasmania						
2004	7 861	—	—	7 861	1 048	7.5
2005	6 136	—	—	6 136	981	6.3
2006	5 571	—	—	5 571	999	5.6
2007	5 058	—	—	5 058	1 196	4.2
2008	10 749	—	—	10 749	1 224	8.8
Australia(d)						
2004	1 816 556	129 489	68 920	2 014 965	150 561	13.4
2005	1 818 426	135 412	72 662	2 026 500	153 204	13.2
2006	1 781 668	117 819	81 710	1 981 198	158 167	12.5
2007	1 370 690	81 022	78 727	1 530 439	163 951	9.3
2008	1 837 034	56 139	63 621	1 956 794	166 197	11.8

— nil or rounded to zero (including null cells)

(a) Fresh weight.

(b) Wine-grape production data are different than grape-crushings data in wine manufacturing and production tables (see Explanatory Notes, paragraph 4).

(c) Yield represents the quantity of grapes produced per hectare of bearing vines.

(d) Includes Australian Capital Territory (ACT) and Northern Territory (NT).

Source: ABS data available on request, Vineyards Survey 2008.

AREA OF VINES BY GRAPE VARIETY, At harvest—2008

	NOT YET BEARING (PLANTED OR GRAFTED)			Total
	Bearing	Prior to	During	
		collection	collection	
ha	year	year	ha	
Red grapes				
Barbera	153	—	4	157
Cabernet Franc	654	27	12	693
Cabernet Sauvignon	27 309	167	78	27 553
Durif	417	6	11	433
Grenache	1 977	26	9	2 011
Malbec	348	9	6	362
Mataro (Mourvedre)	764	10	11	785
Merlot	10 537	173	53	10 764
Meunier	104	2	—	106
Muscat a Petit Grains Rouge/Rose	229	3	5	237
Nebbiolo	94	5	6	105
Petit Verdot	1 330	15	9	1 354
Pinot Noir	4 208	140	143	4 490
Ruby Cabernet	1 140	—	2	1 142
Sangiovese	495	14	9	517
Shiraz	42 806	724	447	43 977
Tarrango	102	—	—	102
Tempranillo	345	15	26	386
Touriga	45	2	1	48
Zinfadel	128	7	5	140
All other red grapes	4 758	122	121	5 001
Red grapes nec(a)	104	11	5	121
<i>Total red grapes</i>	<i>98 045</i>	<i>1 476</i>	<i>961</i>	<i>100 482</i>
White grapes				
Chardonnay	30 820	546	198	31 564
Chenin Blanc	614	10	19	642
Colombard	2 619	34	16	2 669
Crouchen	117	—	—	117
Doradillo	71	—	2	73
Marsanne	207	3	2	213
Muscadelle (Tokay)	153	2	—	155
Muscat a Petit Grains Blanc	234	25	3	263
Muscat Gordo Blanco	2 172	126	67	2 364
Palomino	49	2	—	50
Pinot Gris	2 078	566	192	2 835
Riesling	4 270	87	44	4 400
Roussane	58	6	5	69
Sauvignon Blanc	5 327	681	396	6 404
Semillon	6 453	206	57	6 716
Sultana	4 907	48	24	4 979
Traminer	809	27	4	841
Trebbiano	219	—	—	219
Verdelho	1 712	35	14	1 761
Viognier	1 217	151	33	1 401
All other white grapes	3 993	247	151	4 391
White grapes nec(a)	53	13	1	67
<i>Total white grapes</i>	<i>68 152</i>	<i>2 813</i>	<i>1 229</i>	<i>72 193</i>
Total grapes	166 197	4 289	2 190	172 676

— nil or rounded to zero (including null cells)

(a) Variables not specified.

Source: ABS data available on request, Vineyards Survey, 2008.

GRAPE PRODUCTION (a)

	Winemaking(b)	Drying	Table and other	Total	Yield(c)
	t	t	t	t	t/ha
Red grapes					
Barbera	1 348	—	—	1 348	8.8
Cabernet Franc	4 001	—	—	4 001	6.1
Cabernet Sauvignon	258 066	—	—	258 066	9.5
Durif	5 352	—	—	5 352	12.8
Grenache	19 755	—	—	19 755	10.0
Malbec	2 713	—	—	2 713	7.8
Mataro (Mourvedre)	8 401	—	—	8 401	11.0
Merlot	125 285	—	—	125 285	11.9
Meunier	1 277	—	—	1 277	12.2
Muscat a Petit Grains Rouge/Rose	1 320	—	72	1 393	6.1
Nebbiolo	420	—	—	420	4.4
Petit Verdot	23 989	—	—	23 989	18.0
Pinot Noir	43 923	—	—	43 923	10.4
Ruby Cabernet	18 748	—	—	18 748	16.4
Sangiovese	5 630	—	—	5 630	11.4
Shiraz	441 950	—	—	441 950	10.3
Tarrango	2 056	—	—	2 056	20.2
Tempranillo	3 680	—	—	3 680	10.7
Touriga	315	—	—	315	6.9
Zinfadel	833	—	—	833	6.5
All other red grapes	15 044	4 747	34 347	54 138	11.4
Red grapes nec(d)	16	30	—	46	0.4
Total red grapes	984 121	4 777	34 419	1 023 317	10.4
White grapes					
Chardonnay	428 082	—	—	428 082	13.9
Chenin Blanc	8 537	—	—	8 537	13.9
Colombard	59 202	—	—	59 202	22.6
Crouchen	2 909	—	—	2 909	24.8
Doradillo	1 051	—	—	1 051	14.8
Marsanne	1 870	—	—	1 870	9.0
Muscadelle (Tokay)	800	—	—	800	5.2
Muscat a Petit Grains Blanc	3 017	—	—	3 017	12.9
Muscat Gordo Blanco	39 311	1 536	8	40 856	18.8
Palomino	356	—	—	356	7.3
Pinot Gris	26 156	—	—	26 156	12.6
Riesling	39 305	—	—	39 305	9.2
Roussane	368	—	—	368	6.3
Sauvignon Blanc	62 420	—	—	62 420	11.7
Semillon	100 031	—	—	100 031	15.5
Sultana	17 335	42 549	6 024	65 907	13.4
Traminer	11 563	—	—	11 563	14.3
Trebbiano	3 012	—	—	3 012	13.8
Verdelho	20 464	—	—	20 464	12.0
Viognier	12 359	—	—	12 359	10.2
All other white grapes	14 750	6 812	23 148	44 710	11.2
White grapes nec(d)	17	465	22	504	9.6
Total white grapes	852 913	51 362	29 202	933 477	13.7
Total Grapes	1 837 034	56 139	63 621	1 956 794	11.8

— nil or rounded to zero (including null cells)

(a) Fresh weight.

(b) Wine-grape production data are different than grape-crushings data in wine manufacturing and production tables (see Explanatory Notes, paragraph 4).

(c) Yield represents the quantity of grapes produced per hectare of bearing vines.

(d) Varieties not specified.

Source: ABS data available on request, Vineyards Survey 2008.

CHANGES TO TOTAL
AREA DURING 2007–08

	<i>Planted</i>	<i>Lost(a)</i>	<i>Net change</i>
	ha	ha	ha
Red grapes			
Barbera	4	1	3
Cabernet Franc	12	21	-8
Cabernet Sauvignon	78	470	-392
Durif	11	5	6
Grenache	9	46	-37
Malbec	6	18	-12
Mataro (Mourvedre)	11	36	-26
Merlot	53	192	-139
Meunier	—	—	—
Muscat a Petit Grains Rouge/Rose	5	13	-9
Nebbiolo	6	1	6
Petit Verdot	9	33	-24
Pinot Noir	143	68	74
Ruby Cabernet	2	102	-100
Sangiovese	9	10	-2
Shiraz	447	557	-110
Tarrango	—	39	-39
Tempranillo	26	5	21
Touriga	1	4	-4
Zinfadel	5	7	-2
All other red grapes	121	301	-180
Red grapes nec(b)	5	31	-25
<i>Total red grapes</i>	<i>961</i>	<i>1 961</i>	<i>-1 000</i>
White grapes			
Chardonnay	198	654	-456
Chenin Blanc	19	35	-17
Colombard	16	107	-91
Crouchen	—	4	-4
Doradillo	2	27	-25
Marsanne	2	6	-4
Muscadelle (Tokay)	—	4	-4
Muscat a Petit Grains Blanc	3	3	—
Muscat Gordo Blanco	67	234	-167
Palomino	—	4	-4
Pinot Gris	192	11	180
Riesling	44	118	-74
Roussane	5	—	5
Sauvignon Blanc	396	73	323
Semillon	57	137	-81
Sultana	24	713	-689
Traminer	4	10	-5
Trebbiano	—	42	-42
Verdelho	14	41	-27
Viognier	33	17	17
All other white grapes	151	250	-99
White grapes nec(b)	1	27	-26
<i>Total white grapes</i>	<i>1 229</i>	<i>2 517</i>	<i>-1 289</i>
Total grapes	2 190	4 479	-2 288

— nil or rounded to zero (including null cells)

(a) Area lost due to vines being pulled out or changed to another variety e.g. grafted.

(b) Varieties not specified.

Source: ABS data available on request, Vineyards Survey, 2008.

CHANGES TO TOTAL
AREA DURING 2007–08

	<i>Planted</i>	<i>Lost(a)</i>	<i>Net change</i>
	ha	ha	ha
New South Wales			
Total red grapes	139	393	-254
Total white grapes	293	514	-221
<i>Total</i>	432	906	-475
Victoria			
Total red grapes	248	618	-370
Total white grapes	299	1 169	-870
<i>Total</i>	547	1 786	-1 239
Queensland			
Total red grapes	21	73	-52
Total white grapes	29	63	-34
<i>Total</i>	51	136	-86
South Australia			
Total red grapes	475	667	-192
Total white grapes	413	619	-206
<i>Total</i>	887	1 285	-398
Western Australia			
Total red grapes	48	188	-140
Total white grapes	135	143	-9
<i>Total</i>	183	331	-149
Tasmania			
Total red grapes	31	20	11
Total white grapes	60	10	50
<i>Total</i>	91	30	61
Australia(b)			
<i>Total red grapes</i>	961	1 961	-1 000
<i>Total white grapes</i>	1 229	2 517	-1 289
<i>Total</i>	2 190	4 479	-2 288

(a) Area lost due to vines being pulled out or changed to another variety e.g. grafted.

(b) Includes Australian Capital Territory and Northern Territory.

Source: ABS data available on request, Vineyards Survey 2008.

	NOT YET BEARING (PLANTED OR GRAFTED)			Total
	Bearing	Prior to	During	
		collection	collection	
ha	year	year	ha	
NEW SOUTH WALES				
Big Rivers				
Red grapes	12 993	209	115	13 316
White grapes	14 667	718	227	15 612
<i>Total</i>	27 659	927	342	28 927
Western Plains				
Red grapes	167	—	—	167
White grapes	146	1	—	146
<i>Total</i>	313	1	—	314
Central Ranges				
Red grapes	4 499	32	12	4 543
White grapes	2 597	37	35	2 668
<i>Total</i>	7 096	68	47	7 211
Southern New South Wales				
Red grapes	1 467	22	8	1 497
White grapes	458	55	16	529
<i>Total</i>	1 925	77	23	2 025
South Coast				
Red grapes	117	10	—	127
White grapes	113	10	1	124
<i>Total</i>	229	20	1	251
Northern Slopes				
Red grapes	203	3	—	206
White grapes	71	5	—	75
<i>Total</i>	274	8	—	282
Northern Rivers				
Red grapes	23	1	—	23
White grapes	20	—	—	20
<i>Total</i>	43	1	—	44
Hunter Valley				
Red grapes	1 688	58	4	1 750
White grapes	2 732	25	14	2 771
<i>Total</i>	4 420	82	19	4 521
New South Wales				
Red grapes	21 156	334	139	21 629
White grapes	20 802	851	293	21 946
<i>Total</i>	41 958	1 185	432	43 574

— nil or rounded to zero (including null cells)

(a) At harvest, 2008.

Source: ABS data available on request, Vineyards Survey 2008.

	NOT YET BEARING (PLANTED OR GRAFTED)			
	Bearing	Prior to	During	Total
		collection	collection	
	year	year		
	ha	ha	ha	ha
.....				
VICTORIA				
North West Victoria				
Red grapes	9 132	110	125	9 367
White grapes	13 381	387	168	13 936
<i>Total</i>	22 513	497	293	23 303
North East Victoria				
Red grapes	2 132	14	20	2 166
White grapes	972	38	61	1 072
<i>Total</i>	3 104	52	82	3 238
Central Victoria				
Red grapes	3 336	75	47	3 458
White grapes	1 260	61	49	1 370
<i>Total</i>	4 596	137	96	4 828
Western Victoria				
Red grapes	1 300	28	9	1 338
White grapes	284	12	4	301
<i>Total</i>	1 584	41	13	1 638
Port Philip				
Red grapes	2 530	44	43	2 617
White grapes	1 581	51	16	1 649
<i>Total</i>	4 111	95	59	4 265
Gippsland				
Red grapes	121	5	3	129
White grapes	65	4	2	71
<i>Total</i>	186	10	4	200
Victoria				
Red grapes	18 550	276	248	19 075
White grapes	17 544	555	299	18 398
<i>Total</i>	36 094	831	547	37 472
.....				
QUEENSLAND				
Queensland				
Red grapes	1 679	15	21	1 716
White grapes	1 411	20	29	1 461
<i>Total</i>	3 090	36	51	3 176

(a) At harvest, 2008.

Source: ABS data available on request, Vineyards Survey 2008.

	NOT YET BEARING (PLANTED OR GRAFTED)			
	Bearing	Prior to	During	Total
		collection	collection	
	year	year		
	ha	ha	ha	ha
SOUTH AUSTRALIA				
Mount Lofty Ranges				
Red grapes	5 628	67	52	5 746
White grapes	3 569	151	96	3 816
<i>Total</i>	9 197	218	148	9 562
Barossa				
Red grapes	8 683	261	220	9 164
White grapes	3 190	39	45	3 274
<i>Total</i>	11 873	300	265	12 438
Fleurieu				
Red grapes	10 896	97	81	11 074
White grapes	2 699	62	42	2 802
<i>Total</i>	13 595	159	123	13 876
Limestone Coast				
Red grapes	11 367	77	33	11 477
White grapes	3 083	400	29	3 512
<i>Total</i>	14 450	477	61	14 988
Lower Murray				
Red grapes	12 506	171	90	12 766
White grapes	8 934	184	200	9 318
<i>Total</i>	21 440	355	290	22 084
The Peninsula				
Red grapes	44	—	—	44
White grapes	8	—	1	9
<i>Total</i>	52	—	1	53
Far North				
Red grapes	149	3	—	152
White grapes	2	—	—	2
<i>Total</i>	151	3	—	154
South Australia				
Red grapes	49 273	675	475	50 423
White grapes	21 484	835	413	22 733
<i>Total</i>	70 757	1 510	887	73 155

— nil or rounded to zero (including null cells)

(a) At harvest, 2008.

Source: ABS data available on request, Vineyards Survey 2008.

	NOT YET BEARING (PLANTED OR GRAFTED)			
	Bearing	Prior to	During	Total
		collection	collection	
	year	year		
	ha	ha	ha	ha
.....				
WESTERN AUSTRALIA				
Greater Perth				
Red grapes	793	9	4	806
White grapes	851	39	19	909
<i>Total</i>	<i>1 644</i>	<i>47</i>	<i>24</i>	<i>1 715</i>
Central Western Australia				
Red grapes	115	4	6	125
White grapes	48	1	—	49
<i>Total</i>	<i>164</i>	<i>5</i>	<i>6</i>	<i>174</i>
South West Australia				
Red grapes	5 729	76	38	5 843
White grapes	5 172	374	116	5 661
<i>Total</i>	<i>10 901</i>	<i>450</i>	<i>154</i>	<i>11 504</i>
Western Australian South East Coastal				
Red grapes	5	1	—	6
White grapes	6	—	—	6
<i>Total</i>	<i>11</i>	<i>1</i>	<i>—</i>	<i>12</i>
Eastern Plains, Inland and North of WA				
Red grapes	18	—	—	18
White grapes	9	—	—	9
<i>Total</i>	<i>26</i>	<i>—</i>	<i>—</i>	<i>26</i>
Western Australia				
Red grapes	6 660	89	48	6 797
White grapes	6 086	413	135	6 634
<i>Total</i>	<i>12 746</i>	<i>503</i>	<i>183</i>	<i>13 431</i>
.....				
TASMANIA				
Tasmania				
Red grapes	637	81	31	749
White grapes	587	111	60	758
<i>Total</i>	<i>1 224</i>	<i>192</i>	<i>91</i>	<i>1 507</i>
.....				
AUSTRALIA				
Australia				
Red grapes	98 045	1 476	961	100 482
White grapes	68 152	2 813	1 229	72 193
Total	166 197	4 289	2 190	172 676

— nil or rounded to zero (including null cells)

(a) At harvest, 2008.

Source: ABS data available on request, Vineyards Survey 2008.

GRAPE PRODUCTION(a)

	Wine-making	Drying	Table and other	Total	Area of vines bearing	Yield(b)
	t	t	t	t	ha	t/ha
NEW SOUTH WALES						
Big Rivers						
Red grapes	181 064	1 154	4 718	186 935	12 993	14.4
White grapes	241 261	7 480	4 938	253 678	14 667	17.3
Total	422 324	8 633	9 655	440 613	27 659	15.9
Western Plains						
Red grapes	1 987	—	—	1 987	167	11.9
White grapes	1 438	—	—	1 438	146	9.9
Total	3 425	—	—	3 425	313	11.0
Central Ranges						
Red grapes	37 226	—	—	37 226	4 499	8.3
White grapes	26 377	—	—	26 377	2 597	10.2
Total	63 603	—	—	63 603	7 096	9.0
Southern New South Wales						
Red grapes	11 062	5	—	11 067	1 467	7.5
White grapes	4 344	104	—	4 448	458	9.7
Total	15 406	109	—	15 514	1 925	8.1
South Coast						
Red grapes	625	—	—	625	117	5.4
White grapes	843	—	—	843	113	7.5
Total	1 468	—	—	1 468	229	6.4
Northern Slopes						
Red grapes	1 081	—	—	1 081	203	5.3
White grapes	318	—	—	318	71	4.5
Total	1 398	—	—	1 398	274	5.1
Northern Rivers						
Red grapes	119	—	—	119	23	5.3
White grapes	94	—	—	94	20	4.7
Total	213	—	—	213	43	5.0
Hunter Valley						
Red grapes	7 780	—	13	7 793	1 688	4.6
White grapes	20 372	—	10	20 382	2 732	7.5
Total	28 152	—	23	28 175	4 420	6.4
New South Wales						
Red grapes	240 943	1 158	4 732	246 833	21 156	11.7
White grapes	295 046	7 584	4 948	307 577	20 802	14.8
Total	535 989	8 742	9 679	554 410	41 958	13.2

— nil or rounded to zero (including null cells)

Source: ABS data available on request, Vineyards Survey 2008.

(a) Fresh weight at harvest 2008.

(b) Yield represents the quantity of grapes produced per hectare of bearing vines.

GRAPE PRODUCTION(a)

	Wine-making	Drying	Table and other	Total	Area of vines bearing	Yield(b)
	t	t	t	t	ha	t/ha
VICTORIA						
North West Victoria						
Red grapes	118 070	2 733	22 087	142 890	9 132	15.6
White grapes	168 477	42 593	14 431	225 501	13 381	16.9
<i>Total</i>	286 547	45 326	36 519	368 391	22 513	16.4
North East Victoria						
Red grapes	18 060	—	—	18 060	2 132	8.5
White grapes	10 678	—	—	10 678	972	11.0
<i>Total</i>	28 738	—	—	28 738	3 104	9.3
Central Victoria						
Red grapes	28 243	—	95	28 338	3 336	8.5
White grapes	13 638	—	1	13 639	1 260	10.8
<i>Total</i>	41 881	—	96	41 976	4 596	9.1
Western Victoria						
Red grapes	4 638	—	—	4 638	1 300	3.6
White grapes	1 457	351	—	1 808	284	6.4
<i>Total</i>	6 095	351	—	6 446	1 584	4.1
Port Phillip						
Red grapes	17 259	—	—	17 259	2 530	6.8
White grapes	13 195	—	—	13 195	1 581	8.3
<i>Total</i>	30 454	—	—	30 454	4 111	7.4
Gippsland						
Red grapes	529	—	—	529	121	4.4
White grapes	308	—	—	308	65	4.7
<i>Total</i>	837	—	—	837	186	4.5
Victoria						
Red grapes	186 798	2 733	22 182	211 713	18 550	11.4
White grapes	207 753	42 944	14 432	265 129	17 544	15.1
<i>Total</i>	394 551	45 677	36 614	476 842	36 094	13.2
QUEENSLAND						
Queensland						
Red grapes	2 042	—	4 233	6 275	1 679	3.7
White grapes	1 265	69	7 004	8 338	1 411	5.9
<i>Total</i>	3 307	69	11 237	14 612	3 090	4.7

— nil or rounded to zero (including null cells)

Source: ABS data available on request, Vineyards Survey 2008.

(a) Fresh weight at harvest 2008.

(b) Yield represents the quantity of grapes produced per hectare of bearing vines.

GRAPE PRODUCTION(a)

	Wine-making	Drying	Table and other	Total	Area of vines bearing	Yield(b)
	t	t	t	t	ha	t/ha
SOUTH AUSTRALIA						
Mount Lofty Ranges						
Red grapes	36 440	420	10	36 870	5 628	6.6
White grapes	33 735	—	12	33 747	3 569	9.5
<i>Total</i>	70 175	420	22	70 617	9 197	7.7
Barossa						
Red grapes	58 468	—	—	58 468	8 683	6.7
White grapes	30 842	—	—	30 842	3 190	9.7
<i>Total</i>	89 309	—	—	89 309	11 873	7.5
Fleurieu						
Red grapes	99 364	—	—	99 364	10 896	9.1
White grapes	34 008	114	2	34 123	2 699	12.6
<i>Total</i>	133 372	114	2	133 487	13 595	9.8
Limestone Coast						
Red grapes	94 329	—	—	94 329	11 367	8.3
White grapes	37 315	—	1	37 316	3 083	12.1
<i>Total</i>	131 643	—	1	131 644	14 450	9.1
Lower Murray						
Red grapes	220 347	294	467	221 108	12 506	17.7
White grapes	163 089	645	438	164 172	8 934	18.4
<i>Total</i>	383 437	938	905	385 280	21 440	18.0
The Peninsula						
Red grapes	254	—	—	254	44	5.8
White grapes	62	—	—	62	8	8.0
<i>Total</i>	316	—	—	316	52	6.1
Far North						
Red grapes	847	—	—	847	149	5.7
White grapes	15	—	—	15	2	7.3
<i>Total</i>	861	—	—	861	151	5.7
South Australia						
Red grapes	510 049	714	477	511 239	49 273	10.4
White grapes	299 064	759	453	300 276	21 484	14.0
<i>Total</i>	809 113	1 472	930	811 515	70 757	11.5

— nil or rounded to zero (including null cells)

Source: ABS data available on request, Vineyards Survey 2008.

(a) Fresh weight at harvest 2008.

(b) Yield represents the quantity of grapes produced per hectare of bearing vines.

GRAPE PRODUCTION(a)

	Wine-making	Drying	Table and other	Total	Area of vines bearing	Yield(b)
	t	t	t	t	ha	t/ha
WESTERN AUSTRALIA						
Greater Perth						
Red grapes	3 569	157	990	4 716	793	5.9
White grapes	5 492	7	1 161	6 660	851	7.8
<i>Total</i>	9 061	164	2 151	11 376	1 644	6.9
Central Western Australia						
Red grapes	134	15	784	934	115	8.1
White grapes	207	—	126	333	48	6.9
<i>Total</i>	341	15	910	1 267	164	7.7
South West Australia						
Red grapes	34 768	—	472	35 240	5 729	6.2
White grapes	37 914	—	196	38 110	5 172	7.4
<i>Total</i>	72 682	—	667	73 350	10 901	6.7
Western Australian South East Coastal						
Red grapes	31	—	—	31	5	6.0
White grapes	51	—	—	51	6	8.4
<i>Total</i>	82	—	—	82	11	7.3
Eastern Plains, Inland and North of WA						
Red grapes	17	—	236	253	18	14.5
White grapes	13	—	80	93	9	10.9
<i>Total</i>	30	—	316	346	26	13.3
Western Australia						
Red grapes	38 520	172	2 482	41 175	6 660	6.2
White grapes	43 677	7	1 563	45 246	6 086	7.4
<i>Total</i>	82 197	179	4 045	86 421	12 746	6.8
TASMANIA						
Tasmania						
Red grapes	5 300	—	—	5 300	637	8.3
White grapes	5 449	—	—	5 449	587	9.3
<i>Total</i>	10 749	—	—	10 749	1 224	8.8
AUSTRALIA						
Australia(c)						
Red grapes	984 121	4 777	34 419	1 023 317	98 045	10.4
White grapes	852 913	51 362	29 202	933 477	68 152	13.7
Total	1 837 034	56 139	63 621	1 956 794	166 197	11.8

— nil or rounded to zero (including null cells)

(a) Fresh weight at harvest 2008.

(b) Yield represents the quantity of grapes produced per hectare of bearing vines.

(c) Includes Australian Capital Territory (ACT) and Northern Territory (NT).

Source: ABS data available on request, Vineyards Survey 2008.

IRRIGATION OF GRAPEVINES, By state—2008

	NSW	Vic.	SA	Other states	Aust.
Total vineyards (no.)	1 543	2 241	2 906	1 225	7 915
Vineyards irrigated with any other water but rainfall (no.)	1 330	1 956	2 706	998	6 990
Proportion of vineyards using irrigation (%)	86.2	87.3	93.1	81.5	88.3
Area of grapevines watered by irrigation (ha)	41 088	34 623	69 772	16 062	161 545
Quantity of water used for irrigation of grapevines (ML)	157 279	141 709	188 810	32 595	520 393
Usage (ML per ha)	3.8	4.1	2.7	2.0	3.2

Source: ABS data available on request, Vineyards Survey 2008.

WATERING METHOD USED(a), By state—2008

	NSW	Vic.	SA	Other states	Aust.
Spray excluding microspray					
Vineyards (no.)	191	645	671	56	1 563
Area (ha)	2 702	8 792	9 841	579	21 912
Proportion of total irrigated area (%)	6.6	25.4	14.1	3.6	13.6
Dip or microspray					
Vineyards (no.)	896	1 079	2 087	858	4 920
Area (ha)	31 527	23 996	60 113	15 270	130 905
Proportion of total irrigated area (%)	76.7	69.3	86.2	95.1	81.0
Furrow or flood					
Vineyards (no.)	297	384	102	10	793
Area (ha)	6 923	2 712	548	24	10 208
Proportion of total irrigated area (%)	16.8	7.8	0.8	0.1	6.3
Other(b)					
Vineyards (no.)	1	4	3	2	10
Area (ha)	3	25	11	1	41
Proportion of total irrigated area (%)	—	0.1	—	—	—

— nil or rounded to zero (including null cells)

(a) More than one method may be used.

(b) Includes method not specified.

Source: ABS data available on request, Vineyards Survey, 2008.

	NSW	Vic.	SA	Other states	Aust.
Surface water from state/private irrigation schemes					
Vineyards (no.)	875	1 302	1 259	160	3 596
Quantity of water used (ML)	122 757	118 414	111 041	14 471	366 683
Proportion of total irrigated area (%)	77.7	83.0	58.5	43.7	70.0
Other surface water					
Vineyards (no.)	215	332	308	411	1 266
Quantity of water used (ML)	10 656	11 060	15 640	9 057	46 414
Proportion of total irrigated area (%)	6.7	7.7	8.2	27.3	8.9
Underground water supply					
Vineyards (no.)	202	120	912	231	1 465
Quantity of water used (ML)	18 464	3 236	45 999	7 580	75 280
Proportion of total irrigated area (%)	11.7	2.3	24.2	22.9	14.4
Reticulated water supply					
Vineyards (no.)	10	73	348	79	510
Quantity of water used (ML)	268	1 903	4 498	442	7 111
Proportion of total irrigated area (%)	0.2	1.3	2.4	1.3	1.4
Recycled water					
Vineyards (no.)	4	35	94	1	146
Quantity of water used (ML)	78	815	3 606	50	4 596
Proportion of total irrigated area (%)	—	0.6	1.9	0.2	0.9
Other(b)					
Vineyards (no.)	12	17	52	6	87
Quantity of water used (ML)	112	72	378	21	582
Proportion of total irrigated area (%)	0.1	0.1	0.2	0.1	0.1

— nil or rounded to zero (including null cells)

Source: ABS data available on request, Vineyards Survey, 2008.

(a) More than one method may be used.

(b) Includes method not specified.

SIZE OF GRAPE CRUSH AND NUMBER OF WINERIES—2007–08

	NSW/ACT	Vic.	Qld	SA	WA	Tas.	Aust.
Grapes crushed (000 t)	630.7	299.4	2.2	829.0	62.4	7.8	1 831.5
Proportion (%)	34.4	16.3	0.1	45.3	3.4	0.4	100.0
Wineries crushing							
50–400 t (no.)	47	43	7	33	40	4	174
More than 400 t (no.)	41	44	1	88	30	6	210
Total wineries (no.)	88	87	8	121	70	10	384
Proportion of total wineries (%)	22.9	22.7	2.1	31.5	18.2	2.6	100.0

Source: ABS data available on request, Wine Statistics Survey, 2007-08; Wine and Spirit Production Survey, 2007-08.

WINEMAKERS, Size of production—2007–08

Size (tonnes crushed)	Winemakers no.	GRAPES CRUSHED			TABLE WINE		Total beverage wine produced '000 L
		Red t	White t	Total t	Red '000 L	White '000 L	
50 - 99	36	1 459	1 169	2 628	na	na	na
100 - 149	34	2 396	1 777	4 173	na	na	na
150 - 199	28	2 762	2 100	4 862	na	na	na
200 - 400	76	13 457	8 328	21 785	na	na	na
401 - 1,000	59	23 705	15 502	39 206	15 135	10 163	25 507
1,001 - 3,000	50	42 481	40 651	83 132	26 147	26 191	52 551
3,001 - 5,000	13	26 277	25 551	51 828	17 060	13 741	31 950
5,001 - 10,000	18	71 772	54 705	126 477	56 501	36 722	93 830
10,001 - 20,000	14	107 580	99 374	206 954	76 086	50 301	127 010
20,001 or more	14	666 804	623 674	1 290 478	471 724	421 955	905 683
Total	342	958 693	872 830	1 831 523	(a) 675 320	(b) 567 273	(c) 1 257 398

na not available

(a) Total Red Table wine includes production from those winemakers crushing between 50 and 400 tonnes. This is estimated to be 12.7 million litres.

(b) Total White Table wine includes production from those winemakers crushing between 50 and 400 tonnes. This is estimated to be 8.2 million litres.

(c) Total beverage wine includes production from those winemakers crushing between 50 and 400 tonnes. This is estimated to be 20.9 million litres. This beverage wine production also includes the production of fortified wine.

Source: ABS data available on request, Wine Statistics Survey, 2007-08; Wine and Spirit Production Survey, 2007-08.

14

WINE PRODUCTION (a)

	2003-04	2004-05	2005-06	2006-07	2007-08
Type	'000 L	'000 L	'000 L	'000 L	'000 L
.....					
Beverage wine					
Fortified(b)	20 025	20 275	12 729	8 013	14 806
Unfortified	1 381 064	1 400 074	1 397 754	946 996	1 221 726
Total	1 401 089	1 420 348	1 410 483	955 009	1 236 532
Distillation wine(c)	70 139	13 479	19 305	6 962	8 245
Gross total wine	1 471 228	1 433 827	1 429 788	961 972	1 244 776
Net total wine(d)	1 467 857	1 430 129	1 426 346	960 662	1 243 055

- (a) Production by winemakers crushing more than 400 tonnes annually.
 (b) Relates only to production from unfortified wine of the same vintage.
 (c) For manufacturing brandy and grape spirit. Includes wine obtained from marc.
 (d) Excludes grape spirit used for fortifying (assumes 95.6% alcohol by volume).
 Source: ABS data available on request, Wine and Spirit Production Survey, 2007-08.

15

WINE PRODUCTION (a), by State - 2007-08

	NSW/ACT	Vic.	Qld	SA	WA	Tas.	Aust.
	'000 L	'000 L	'000 L	'000 L	'000 L	'000 L	'000 L
.....							
Beverage wine(b)							
Fortified	np	np	—	7 972	4	—	14 806
Unfortified							
Red & Rose	216 338	99 861	314	322 103	21 847	2 190	662 653
White	206 016	93 495	196	236 349	20 807	2 210	559 073
Total	422 354	193 356	510	558 452	42 654	4 400	1 221 726
Total Beverage Wine	427 456	195 084	510	566 424	42 658	4 401	1 236 532
Distillation wine(c)	np	np	—	6 446	—	—	8 245
Gross total wine	428 336	196 003	510	572 870	42 658	4 401	1 244 776
Net total wine(d)	427 522	195 710	510	572 259	42 654	4 401	1 243 055

- nil or rounded to zero (including null cells)
 np not available for publication but included in totals where applicable, unless otherwise indicated
 (a) Production by winemakers crushing more than 400 tonnes annually.
 (b) Relates only to production from unfortified wine of the same vintage.
 (c) For manufacturing brandy and grape spirit. Includes wine obtained from marc.
 (d) Excludes grape spirit used for fortifying (assumes 95.6% alcohol by volume).
 Source: ABS data available on request, Wine and Spirit Production Survey, 2007-08.

<i>Fresh grapes crushed by</i>	2005-06	2006-07	2007-08		
	<i>Total</i>	<i>Total</i>	<i>Red</i>	<i>White</i>	<i>Total</i>
	t	t	t	t	t
.....					
WINERIES CRUSHING MORE THAN 400 TONNES					
New South Wales(b)	649 076	481 959	283 000	339 678	622 678
Victoria	249 434	223 371	139 370	152 745	292 115
Queensland	2 473	499	446	275	722
South Australia	904 360	594 825	489 380	330 980	820 361
Western Australia	58 781	61 111	22 919	32 094	55 013
Tasmania	3 127	2 716	3 503	3 684	7 187
<i>Australia</i>	<i>1 867 251</i>	<i>1 364 481</i>	<i>938 618</i>	<i>859 457</i>	<i>1 798 075</i>
.....					
WINERIES CRUSHING 50 TO 400 TONNES					
New South Wales(b)	7 998	5 597	3 584	4 391	7 975
Victoria	8 431	6 885	4 926	2 386	7 312
Queensland	1 592	1 446	876	631	1 506
South Australia	8 265	10 230	6 626	2 020	8 646
Western Australia	7 283	7 952	3 793	3 629	7 422
Tasmania	740	759	271	317	588
<i>Australia</i>	<i>34 309</i>	<i>32 869</i>	<i>20 075</i>	<i>13 373</i>	<i>33 448</i>
.....					
TOTAL WINERIES CRUSHING 50 TONNES OR MORE					
New South Wales(b)	657 074	487 556	286 584	344 069	630 653
Victoria	257 865	230 256	144 295	155 131	299 426
Queensland	4 065	1 945	1 322	906	2 228
South Australia	912 625	605 055	496 006	333 001	829 007
Western Australia	66 064	69 063	26 712	35 723	62 435
Tasmania	3 867	3 475	3 773	4 001	7 774
<i>Australia</i>	<i>1 901 560</i>	<i>1 397 350</i>	<i>958 693</i>	<i>872 830</i>	<i>1 831 523</i>

(a) Grape crush data are greater than wine grape production data in the viticulture tables (see paragraph 4 of the Explanatory Notes).

(b) Includes Australian Capital Territory.

Source: ABS data available on request, Wine Statistics Survey, Wine and Spirit Production Survey.

GRAPE SPIRIT USED IN CURRENT VINTAGE WINE

	2003-04	2004-05	2005-06	2006-07	2007-08
	'000 L	'000 L	'000 L	'000 L	'000 L
New South Wales	1 167	1 101	1 310	354	814
Victoria	675	584	405	620	293
South Australia	1 523	2 006	889	331	611
Other states	6	6	838	5	4
Australia	3 371	3 698	3 442	1 309	1 721

Source: ABS data available on request, Wine and Spirit production Survey.

INVENTORIES OF AUSTRALIAN WINE AND GRAPE JUICE HELD BY WINEMAKERS (a)

	2004	2005	2006	2007	2008
<i>Inventories at 30 June</i>	'000 L	'000 L	'000 L	'000 L	'000 L
Beverage wine					
Fortified wine(b)					
Sherry	12 238	13 912	12 945	na	na
Port	50 188	49 423	51 558	na	na
Other(c)	7 257	12 092	10 514	na	na
<i>Total</i>	69 683	75 427	75 017	75 011	68 713
Sparkling wine(d)					
Bottle fermentation	59 299	54 314	54 190	na	na
Bulk fermentation	22 131	33 247	30 891	na	na
<i>Total(a)</i>	81 430	87 561	85 081	148 458	106 201
Carbonated	532	638	3 558	6 156	6 766
Flavoured(e)	5 069	4 909	8 950	5 214	11 505
Table wine(f)					
White	589 645	705 544	768 921	592 920	660 653
Red and rose	1 108 146	1 189 107	1 165 373	955 853	1 018 537
<i>Total</i>	1 697 791	1 894 650	1 934 295	1 548 773	1 679 190
Total beverage wine	1 854 506	2 063 185	2 106 900	1 783 613	1 872 376
Distillation wine	976	1 230	4 456	993	883
Unfermented grape juice	17 175	24 030	29 512	49 732	64 991
Concentrated must (single strength)	13 482	9 347	15 179	8 488	3 668

(a) Inventories from winemakers who crush more than 400 tonnes of grapes and have domestic sales of 250,000 litres.

(b) Data for the split in types of fortified wine was not collected in the 2006-07 Inventories of Australian Wine and Brandy survey.

(c) Includes muscat, maderia, tokay and white port.

(d) Data for the split in types of sparkling wine was not collected in the 2006-07 Inventories of Australian Wine and Brandy survey.

(e) Includes wine cocktails, marsala, aperitif and tonic wines, de-alcoholised wine, low and reduced alcohol wine and Vermouth.

(f) Spritzig table wines are included with table wine.

INVENTORIES OF AUSTRALIAN BRANDY AND GRAPE SPIRIT

	2004	2005	2006	2007	2008
	'000 L al	'000 L al	'000 L al	'000 L al	'000 L al
Brandy in bond by age					
Brandy in bond by age: under 2 years	757	1 015	749	r571	631
Brandy in bond by age: 2 years and over	2 482	2 040	2 098	r1 921	1 863
<i>Total brandy in bond</i>	3 238	3 055	2 847	2 492	10 239
Rectified grape spirit for fortifying wine and grape spirit unused	np	np	np	np	np
Spirit held in work in progress (feints and low wine)	np	np	np	np	np
Total inventories	10 699	9 803	11 585	11 787	17 985

np not available for publication but included in totals
where applicable, unless otherwise indicated

r revised

Source: ABS data available on request, Inventories of
Australian Wine and Brandy Survey.

DOMESTIC SALES, EXPORTS AND IMPORTS OF BRANDY

	2002-03	2003-04	2004-05	2005-06	2006-07	2007-08
	'000 L al	'000 L al	'000 L al	'000 L al	'000 L al	'000 L al
Australian brandy						
Domestic sales	651	618	576	535	510	508
Exports	21	11	18	38	8	4
<i>Total disposals</i>	672	629	594	573	518	512
Imported brandy	557	540	519	457	447	452
Consumption(a)	1 208	1 158	1 095	992	957	960

(a) Available for consumption in Australia, Domestic sales plus Imports.

Source: Sales of Australian Wine and Brandy by Winemakers (cat. no. 8504.0).

DOMESTIC SALES OF AUSTRALIAN WINE BY WINEMAKERS (a)

TABLE

SPARKLING

Period	White	Red/rosé	Total	Fortified	Bottle fermented	Bulk fermented	Total	Other(b)	Total
	million L	million L	million L	million L	million L	million L	million L	million L	million L
1995-96	178.7	68.6	247.3	25.9	22.9	7.2	30.1	6.2	309.5
1996-97	185.0	83.7	268.8	25.6	23.4	9.2	32.6	6.6	333.6
1997-98	189.5	88.9	278.4	24.6	22.3	8.8	31.1	4.7	338.8
1998-99	188.3	99.1	287.4	23.9	20.3	12.3	32.6	4.4	348.3
1999-00	193.0	114.1	307.1	23.0	18.2	14.4	32.6	6.6	369.3
2000-01	199.8	125.6	325.3	22.2	16.7	14.0	30.7	6.7	384.8
2001-02	199.9	130.4	330.3	20.4	17.7	12.0	29.7	5.9	386.2
2002-03	201.6	142.8	344.5	20.8	23.0	8.6	31.6	5.5	402.5
2003-04	208.0	147.1	355.0	21.2	21.6	13.1	34.7	6.5	417.4
2004-05	209.3	155.5	364.8	19.9	23.0	15.4	38.4	7.0	430.1
2005-06	r212.6	r154.2	r366.8	18.5	23.1	16.7	39.8	7.3	r432.4
2006-07	218.5	161.9	380.4	17.4	23.3	16.6	39.9	10.2	447.8
2007-08	206.4	154.5	360.9	17.2	21.7	14.9	36.6	11.7	426.4

r revised

(a) Prior to 1997-98, some spritzig style wine was reported as non-table wine.

(b) Includes vermouth, carbonated wines and flavoured wines including cocktails, marsala, aperitif and tonic wines, de-alcoholised wine and low and reduced alcohol wines.

Source: Sales of Australian Wine and Brandy by Winemakers (cat. no. 8504.0).

DOMESTIC SALES AND DOMESTIC SALES VALUE OF AUSTRALIAN WINE

	2002-03	2003-04	2004-05	2005-06	2006-07	2007-08
Domestic sales of Australian wine (million L)	402.5	417.4	430.1	r432.4	r447.8	426.4
Domestic sales value of Australian wine (\$m)	2 097.9	1 970.9	2 097.4	1 899.9	2 004.9	2 096.2

r revised

Source: Sales of Australian Wine and Brandy by Winemakers (cat. no. 8504.0) and ABS data available on request, Inventories of Australian Wine and Brandy Survey.

DOMESTIC SALES OF AUSTRALIAN TABLE WINE(a), By container type

	GLASS BOTTLES LESS THAN 2 LITRES			SOFT PACKS (b)			ALL OTHER CONTAINERS (c) (d)		
	White	Red/rosé	Total	White	Red/rosé	Total	White	Red/rosé	Total
	million L	million L	million L	million L	million L	million L	million L	million L	million L
1995-96	50.6	33.7	84.3	124.4	34.0	158.4	3.8	0.8	4.6
1996-97	55.2	41.1	96.4	126.5	41.6	168.1	3.3	1.0	4.3
1997-98	59.4	46.7	106.1	125.3	41.3	166.6	4.9	0.9	5.8
1998-99	63.4	53.7	117.1	118.0	44.6	162.5	7.0	0.8	7.8
1999-00	69.4	63.5	132.8	118.4	49.8	168.2	5.3	0.8	6.0
2000-01	74.1	70.5	144.6	122.5	53.5	176.0	3.2	1.5	4.7
2001-02	75.7	73.6	149.3	122.8	56.1	178.9	1.4	0.7	2.1
2002-03	81.7	79.8	161.4	118.9	62.8	181.7	1.1	0.3	1.4
2003-04	84.2	82.8	167.1	120.9	62.8	183.7	2.8	1.4	4.3
2004-05	89.5	91.1	180.6	118.8	63.0	181.8	1.1	1.3	2.4
2005-06	r93.0	r91.8	r184.8	118.2	r61.1	179.3	1.4	1.3	2.7
2006-07	r100.3	r101.9	r202.2	116.2	57.3	173.5	2.0	2.7	4.7
2007-08	93.5	94.9	188.4	110.4	55.3	165.7	2.5	4.3	6.8

r revised

(a) Prior to 1997-98, some spritzig style wine was reported as non-table wine.

(b) Soft pack containers include all collapsible packs, plastic or otherwise.

(c) Other containers include tankers, cans and rigid containers including glass two litres and over.

(d) Prior to July 1998, data were collected for glass containers over one litre.

Source: Sales of Australian Wine and Brandy by Winemakers (cat.no. 8504.0).

EXPORTS OF AUSTRALIAN WINE

Period	Table '000 L	Fortified '000 L	Sparkling '000 L	Other '000 L	Total wine '000 L	Total wine \$'000
1994-95	105 542	2 475	5 110	537	113 663	385 706
1995-96	121 037	2 506	5 489	639	129 671	471 576
1996-97	144 892	2 490	6 046	966	154 393	603 297
1997-98	183 024	2 505	6 110	764	192 404	873 847
1998-99	191 728	2 092	6 434	627	200 881	986 822
1999-00	272 842	2 287	9 088	717	284 935	1 372 768
2000-01	328 620	2 032	6 546	1 091	338 289	1 752 082
2001-02	406 207	2 698	8 050	1 438	418 393	2 105 139
2002-03	506 662	3 035	7 933	1 012	518 642	2 423 468
2003-04	571 324	2 512	9 806	755	584 397	2 494 089
2004-05	654 534	2 069	12 445	694	669 741	2 715 290
2005-06	704 293	2 587	14 340	733	721 953	2 756 520
2006-07	768 433	2 782	15 368	625	787 209	2 878 598
2007-08	694 945	2 256	16 311	1 211	714 723	2 680 378

Source: ABS data available on request, International Trade database.

DISPOSALS OF AUSTRALIAN-PRODUCED WINE

<i>Period</i>	<i>Domestic sales of Australian-produced wine</i> '000 L	<i>Exports of Australian-produced wine</i> '000 L	<i>Total disposals</i> '000 L
1994-95	313 357	113 663	427 020
1995-96	309 463	129 671	439 134
1996-97	333 591	154 393	487 984
1997-98	338 814	192 404	531 218
1998-99	348 349	216 149	564 498
1999-00	369 271	284 935	654 206
2000-01	384 847	338 289	723 136
2001-02	386 232	418 393	804 625
2002-03	402 479	518 642	921 121
2003-04	417 378	584 397	1 001 775
2004-05	430 131	669 741	1 099 872
2005-06	432 372	r721 849	r1 154 221
2006-07	r447 832	787 209	r1 235 041
2007-08	426 421	714 723	1 141 144

r revised

Source: Sales of Australian Wine and Brandy by Winemakers (cat. no. 8504.0); Data available on request, International Trade database.

<i>Principal country/region</i>	WINE TYPE				TOTAL WINE			
	<i>Table</i>	<i>Fortified</i>	<i>Sparkling</i>	<i>Other</i>	<i>Quantity</i>		<i>Value</i>	
	'000 L	'000 L	'000 L	'000 L	'000 L	%	\$'000	%
New Zealand	20 414.0	326	1 899	135	22 774	3.2	87 149	3.3
<i>Total Oceania and Antarctica</i>	<i>21 779</i>	<i>385</i>	<i>2 084</i>	<i>141</i>	<i>24 389</i>	<i>3.4</i>	<i>94 464</i>	<i>3.5</i>
Belgium	15 278	4	257	102	15 641	2.2	37 097	1.4
Denmark	29 345	21	71	—	29 437	4.1	63 365	2.4
Finland	3 985	4	129	—	4 118	0.6	14 236	0.5
France	4 496	3	33	76	4 606	0.6	9 581	0.4
Germany, Federal Republic of	20 475	4	19	20	20 518	2.9	46 196	1.7
Ireland	15 157	3	293	13	15 466	2.2	68 705	2.6
Latvia	1 024	110	14	—	1 148	0.2	4 783	0.2
Netherlands	27 639	5	290	—	27 935	3.9	79 879	3.0
Sweden	7 696	7	301	7	8 012	1.1	38 045	1.4
United Kingdom	259 873	499	7 600	126	268 098	37.5	894 699	33.4
<i>Total European Union</i>	<i>387 285</i>	<i>657</i>	<i>9 070</i>	<i>475</i>	<i>397 487</i>	<i>55.6</i>	<i>1 265 771</i>	<i>47.2</i>
Norway	2 641	—	121	—	2 762	0.4	10 585	0.4
Switzerland	1 558	—	6	1	1 566	0.2	5 396	0.2
<i>Total Europe and the Former USSR</i>	<i>392 421</i>	<i>660</i>	<i>9 226</i>	<i>476</i>	<i>402 784</i>	<i>56.4</i>	<i>1 287 627</i>	<i>48.0</i>
Qatar	633	16	11	—	660	0.1	906	—
<i>Total Middle East and North Africa</i>	<i>4 215</i>	<i>46</i>	<i>253</i>	<i>—</i>	<i>4 514</i>	<i>0.6</i>	<i>17 454</i>	<i>0.7</i>
Malaysia	2 683	18	37	1	2 739	0.4	18 344	0.7
Singapore	5 724	22	174	131	6 051	0.8	49 113	1.8
<i>Total Southeast Asia</i>	<i>12 618</i>	<i>47</i>	<i>307</i>	<i>190</i>	<i>13 162</i>	<i>1.8</i>	<i>90 880</i>	<i>3.4</i>
China	13 129	69	159	70	13 427	1.9	61 009	2.3
Hong Kong (SAR of China)	5 005	17	104	75	5 201	0.7	35 677	1.3
Japan	7 937	15	1 187	37	9 176	1.3	49 280	1.8
<i>Total Northeast Asia</i>	<i>30 377</i>	<i>121</i>	<i>1 509</i>	<i>211</i>	<i>32 218</i>	<i>4.5</i>	<i>173 328</i>	<i>6.5</i>
Canada	46 688	391	687	36	47 802	6.7	263 390	9.8
United States of America	182 553	596	2 144	133	185 427	25.9	733 322	27.4
<i>Total Northern America</i>	<i>229 359</i>	<i>988</i>	<i>2 834</i>	<i>169</i>	<i>233 350</i>	<i>32.6</i>	<i>997 260</i>	<i>37.2</i>
<i>Total other regions</i>	<i>4 176</i>	<i>10</i>	<i>97</i>	<i>23</i>	<i>4 305</i>	<i>0.6</i>	<i>19 365</i>	<i>0.7</i>
Total All Countries	694 945	2 256	16 311	1 211	714 723	100.0	2 680 378	100.0

— nil or rounded to zero (including null cells)

Source: ABS data available on request, International Trade database.

EXPORTS OF AUSTRALIAN WINE, By state and territory of origin

<i>Period</i>	<i>NSW</i>	<i>Vic.</i>	<i>Qld</i>	<i>SA</i>	<i>WA</i>	<i>Tas.</i>	<i>NT/ACT</i>	<i>Aust.</i>
.....								
QUANTITY ('000 L)								
1994-95	21 480	8 600	3	82 823	724	31	2	113 663
1995-96	22 410	10 331	155	96 146	596	32	—	129 671
1996-97	25 400	13 548	149	114 408	842	45	—	154 393
1997-98	36 292	16 748	77	138 327	910	49	—	192 404
1998-99	40 302	18 452	36	155 903	1 269	188	—	216 149
1999-00	60 547	23 569	42	198 761	1 893	119	4	284 935
2000-01	79 955	27 874	91	226 941	3 257	148	24	338 289
2001-02	95 512	39 069	89	279 643	3 917	161	1	418 393
2002-03	150 932	48 308	332	313 816	5 014	238	1	518 642
2003-04	160 607	90 036	483	326 779	6 227	261	5	584 397
2004-05	141 476	118 995	298	399 027	9 342	478	125	669 741
2005-06	148 370	146 644	299	417 004	8 866	410	256	721 849
2006-07	178 652	140 961	1 149	452 973	12 950	488	36	787 209
2007-08	168 440	78 336	559	460 781	6 155	437	14	714 723
.....								
VALUE (\$'000)								
2005-06	509 823	649 421	2 612	1 539 051	50 709	3 702	1 202	2 756 520
2006-07	475 319	600 169	5 611	1 739 731	53 130	4 468	171	2 878 598
2007-08	504 059	269 561	2 746	1 852 890	46 482	4 550	88	2 680 378

— nil or rounded to zero (including null cells)

Source: ABS data available on request, International Trade database.

WINE IMPORTS CLEARED FOR HOME CONSUMPTION(a), By wine type

Period	WINE TYPE				TOTAL WINE	
	Table	Fortified	Sparkling	Other	Quantity	Value
	'000 L	'000 L	'000 L	'000 L	'000 L	\$'000
1994-95	9 398	272	3 065	1 322	14 057	61 057
1995-96	16 649	105	2 673	830	20 256	60 478
1996-97	10 105	105	2 387	993	13 589	66 503
1997-98	21 447	135	2 996	1 044	25 622	92 926
1998-99	20 136	92	2 915	1 113	24 255	102 498
1999-00	14 099	685	3 827	995	19 607	113 868
2000-01	7 298	106	2 913	2 457	12 774	92 218
2001-02	8 589	201	3 282	2 407	14 479	115 560
2002-03	11 070	190	3 851	2 001	17 113	139 213
2003-04	11 817	734	4 787	1 399	18 737	152 405
2004-05	14 782	271	5 186	1 899	22 139	r188 240
2005-06	19 597	133	5 923	1 511	27 165	234 097
2006-07	25 490	123	6 990	1 661	34 264	306 350
2007-08	42 580	159	8 267	2 306	53 312	431 382

r revised

(a) Includes litres of wine and litres of alcohol.

Source: Sales of Australian Wine and Brandy by Winemakers (cat. no. 8504.0).

WINE IMPORTS CLEARED FOR HOME CONSUMPTION(a), By country of origin

	2005-06		2006-07		2007-08	
	Quantity	Value	Quantity	Value	Quantity	Value
	'000 L	\$'000	'000 L	\$'000	'000 L	\$'000
New Zealand	13 228	108 523	18 142	155 911	23 859	209 401
Italy	5 450	28 267	5 544	32 070	7 116	40 521
France	4 562	79 897	5 353	96 998	7 087	142 858
Portugal	894	2 658	482	2 050	723	2 888
Spain	796	3 925	947	4 900	1 167	7 265
Chile	476	1 961	586	2 439	4 449	7 284
Germany	411	2 163	901	3 347	557	2 935
South Africa	299	1 166	517	1 382	2 527	5 521
Greece	231	564	236	616	249	625
United States of America	158	783	198	1 485	555	1 675
Argentina	105	349	55	246	2 059	1 758
United Kingdom	73	1 787	68	587	66	519
Other	482	2 054	1 236	4 319	2 898	8 132
Total	27 165	234 097	34 264	306 350	53 312	431 382

(a) Includes litres of wine and litres of alcohol.

Source: ABS data available on request, International Trade database.

EXPORTS AND IMPORTS CLEARED OF FRESH AND DRIED GRAPES

Period	FRESH GRAPES				DRIED GRAPES			
	Exports		Imports		Exports		Imports	
	t	\$'000	t	\$'000	t	\$'000	t	\$'000
1995-96	21 042	46 706	—	—	15 240	34 329	9 265	12 211
1996-97	26 806	67 065	5	33	25 260	52 173	10 282	14 162
1997-98	27 085	52 639	1	8	12 277	29 829	11 852	19 604
1998-99	28 940	67 337	—	—	13 687	36 806	16 229	27 773
1999-00	33 485	74 160	1	4	4 929	13 347	17 077	28 908
2000-01	30 776	71 780	—	—	6 433	17 018	16 908	29 007
2001-02	56 634	135 855	—	—	5 860	13 859	21 050	31 289
2002-03	39 923	96 466	1 015	4 130	9 664	19 898	19 081	28 285
2003-04	44 952	84 867	1 150	4 725	6 799	14 691	25 036	37 159
2004-05	51 753	108 882	4 435	19 057	6 626	15 380	21 258	29 918
2005-06	47 751	115 469	4 528	22 057	7 319	17 625	12 046	19 483
2006-07	40 542	93 799	4 804	25 352	6 780	15 748	26 713	40 333
2007-08	40 956	100 511	12 111	38 790	4 927	12 669	25 809	45 365

— nil or rounded to zero (including null cells)

Source: ABS data available on request, International Trade database.

	2005-06		2006-07		2007-08	
	Quantity	Value	Quantity	Value	Quantity	Value
	t	\$'000	t	\$'000	t	\$'000
Exports of fresh grapes						
Hong Kong (Sar of China)	17 010	41 888	11 098	25 701	11 153	29 340
Indonesia	6 374	14 062	6 821	14 879	7 306	16 775
Malaysia	4 882	11 137	4 063	9 345	3 217	7 208
Singapore	4 532	11 420	3 733	9 571	3 012	7 993
Thailand	3 686	9 845	3 485	8 227	4 770	12 587
New Zealand	1 804	4 330	2 034	4 588	1 912	4 536
Bangladesh	1 147	2 285	825	1 487	957	2 036
Other countries	8 316	20 502	8 483	20 001	8 628	20 037
<i>Total</i>	<i>47 751</i>	<i>115 469</i>	<i>40 542</i>	<i>93 799</i>	<i>40 956</i>	<i>100 511</i>
Imports of fresh grapes						
United States of America	4 519	22 057	4 800	25 352	12 111	38 790
Other countries	9	—	4	—	—	—
<i>Total</i>	<i>4 528</i>	<i>22 057</i>	<i>4 804</i>	<i>25 352</i>	<i>12 111</i>	<i>38 790</i>
Exports of dried grapes						
Germany	2 608	5 927	2 643	5 928	1 976	4 958
United Kingdom	1 195	3 130	1 181	2 757	1 014	2 523
Canada	776	1 779	786	1 683	94	184
Italy	725	1 674	435	1 025	249	727
New Zealand	591	1 635	561	1 519	575	1 634
Other countries	1 424	3 479	1 174	2 836	1 020	2 643
<i>Total</i>	<i>7 319</i>	<i>17 625</i>	<i>6 780</i>	<i>15 748</i>	<i>4 927</i>	<i>12 669</i>
Imports of dried grapes						
Turkey	7 327	10 897	19 915	28 230	14 985	25 076
Greece	2 426	4 335	2 865	5 502	1 300	2 225
United States of America	784	1 802	1 349	2 526	3 408	6 008
Iran	746	910	758	979	3 156	7 336
Other countries	762	1 539	1 826	3 096	2 960	4 720
<i>Total</i>	<i>12 046</i>	<i>19 483</i>	<i>26 713</i>	<i>40 333</i>	<i>25 809</i>	<i>45 365</i>

— nil or rounded to zero (including null cells)

Source: ABS data available on request, International Trade database.

SELECTED PRICE INDEXES, PERCENTAGE CHANGE

<i>Period</i>	SALES RECEIVED BY MANUFACTURERS (a)	CONSUMER PRICE INDEX	
	<i>Total wine</i>	<i>Wine</i>	<i>All groups</i>
1998-99	-1.2	1.3	1.2
1999-00	1.3	0.3	2.4
2000-01	0.1	5.4	6.0
2001-02	2.9	2.9	2.9
2002-03	0.7	0.8	3.1
2003-04	-4.4	1.5	2.4
2004-05	0.4	2.1	2.4
2005-06	-0.5	0.8	3.2
2006-07	-3.6	-0.6	2.9
2007-08	0.2	1.4	3.4

(a) The Sales prices received by manufacturers index represents the price wine manufacturers receive for wines.

Note: For more details on the indexes used in table 32 refer to paragraphs 16-17 in the Explanatory Notes.

Source: ABS data available on request, Price Indexes of Materials Used in Manufacturing Industries, Price Indexes of Articles Produced by Manufacturing Industries, Export Price Index Survey, Import Price Index Survey, Consumer Price Index.

WINE AVAILABLE FOR CONSUMPTION IN AUSTRALIA

<i>Period</i>	<i>Domestic sales of Australian-produced wine</i>	<i>Imports cleared for home consumption (a)</i>	<i>Available for consumption</i>
	'000 L	'000 L	'000 L
1998-99	348 349	24 255	372 604
1999-00	369 271	19 607	388 878
2000-01	384 847	12 774	397 621
2001-02	386 232	14 479	400 711
2002-03	402 479	17 113	419 592
2003-04	417 378	18 737	436 115
2004-05	430 131	22 139	452 270
2005-06	432 372	24 369	456 741
2006-07	447 832	34 275	482 107
2007-08	426 421	53 311	479 732

(a) Includes litres of wine and litres of alcohol.

Source: Sales of Australian Wine and Brandy by Winemakers (cat. no. 8504.0), ABS data available on request, International Trade database.

APPARENT CONSUMPTION OF ALCOHOL PER CAPITA(a)(b), Years ended 30 June

	2001	2002	2003	2004	2005	2006	2007
BEVERAGE (LITRES)							
Wine	26.2	26.0	26.8	27.5	28.1	28.1	29.2
Beer(c)	116.9	113.4	114.6	110.0	107.6	107.0	106.6
ALCOHOL (LITRES OF ALCOHOL)							
Wine	3.0	2.9	3.0	3.1	3.1	3.1	3.1
Beer(c)	5.1	4.8	5.0	4.7	4.6	4.6	4.6
Spirits(d)	1.8	1.9	2.0	2.1	2.2	2.2	2.3
Total alcohol	9.8	9.6	10.0	9.8	9.9	9.9	9.9

- (a) Apparent per person consumption by persons 15 years and over.
- (b) Due to excise tariff reform in July 2006, data may not be directly comparable with data prior to 30 June 2005.
- (c) Mid strength and full strength excise data for 2002 have been adjusted by the ABS to account for reporting errors in beer strength classification. Beer available for consumption in 2004 may not be directly comparable with previous years data.
- (d) Includes Ready to Drink pre-mixed spirits.
- Source: Apparent Consumption of Alcohol, Australia (cat. no. 4307.0.55.001).

AVERAGE WEEKLY HOUSEHOLD EXPENDITURE, Alcoholic Beverages—2003–04

	NSW	Vic.	Qld	SA	WA	Tas.	NT(a)	ACT(b)	Aust.
	\$	\$	\$	\$	\$	\$	\$	\$	\$
Wine	6.77	6.81	4.65	6.26	6.79	5.97	7.22	8.04	6.33
Beer	9.18	8.76	7.95	8.15	13.08	12.45	15.56	7.98	9.25
Spirits	4.06	4.27	4.37	3.91	5.36	3.54	6.80	3.08	4.28
Total(c)	23.41	23.69	20.06	22.49	27.08	26.79	37.63	24.51	23.32

- (a) Households in collection districts defined as very remote or Indigenous communities were excluded, accounting for about 23% of the population in the Northern Territory.
- (b) Estimates for the ACT are the same as those for Canberra.
- (c) Including alcoholic beverages n.f.d.
- Source: Household Expenditure Survey, Australia: Detailed Expenditure Items, 2003–04 (cat. no. 6535.0.55.001).

<i>Country (a)</i>	<i>Total grapes</i>	<i>Area of vines(b)</i>	<i>Yield</i>
	'000 t	'000 ha	t/ha
Italy	8 554	842	10.2
United States of America	7 089	399	17.8
France	6 790	894	7.6
China (excludes SARs and Taiwan)	6 521	485	13.4
Spain	6 072	1 180	5.1
Turkey	3 303	555	6.0
Iran	2 964	338	8.8
Argentina	2 830	219	12.9
Chile	2 319	193	12.0
Australia(c)	2 027	167	12.1
Portugal	1 022	248	4.1
Romania	482	217	2.2
Other Countries	17 425	2 192	7.9
World total	67 397	7 929	8.5

(a) The selection is based on those countries which exceed Australian figures in any of the first two categories.

(b) Includes area of vines not yet bearing.

(c) This table contains details for Australia as reported by Office International de la Vigne et du Vin (O.I.V.). Other tables in this publication contain revised figures for Australia as reported by the ABS.

Source: Office International de la Vigne et du Vin (O.I.V.) 2008.

Country (a)	Wine production	Share of world production	Wine exports	Exports as a proportion of production	Wine consumption	Per capita consumption
	million L	%	million L	%	million L	L
Italy	5 402.1	19.1	1 572.1	29.1	2 701.6	46.5
France	5 210.5	18.5	1 407.7	27.0	3 353.0	55.4
Spain	3 615.8	12.8	1 443.9	39.9	1 368.6	31.8
United States of America	2 288.8	8.1	345.9	15.1	2 511.0	8.4
Argentina	1 522.2	5.4	214.8	14.1	1 097.2	28.3
Australia(b)	1 430.1	5.1	701.9	49.1	452.3	22.4
China (excludes SARs and Taiwan)	1 200.0	4.3	4.9	0.4	1 350.0	1.0
Germany	915.3	3.2	297.0	32.4	1 984.8	24.0
Russia	503.5	1.8	1.4	0.3	1 050.0	7.3
Other countries	6 139.3	21.7	1 984.2	32.3	7 898.9	na
World total	28 227.6	100.0	7 973.8	28.2	23 767.4	na

na not available

(a) The selection is based on those countries which exceed Australian figures in any of the categories of wine production, exports (including exports as a proportion of production) and consumption.

(b) This table contains details for Australia as reported by Office International de la Vigne et du Vin (O.I.V.). Other tables in this publication contain revised figures for Australia as reported by the ABS.

Source: Office International de la Vigne et du Vin (O.I.V.) 2008.

<i>Region (a)</i>	TABLE GRAPES		DRIED GRAPES	
	<i>Production</i>	<i>Exports</i>	<i>Production</i>	<i>Exports</i>
	'000 t	'000 t	'000 t	'000 t
<i>Africa</i>	2 004.7	279.3	40.9	22.4
Egypt	1 175.0	26.4	—	—
South Africa	277.5	230.0	40.0	22.0
<i>America</i>	2 869.4	1 501.4	408.1	189.2
United States of America	860.0	446.3	320.0	110.2
Chile	813.5	738.5	64.0	52.8
<i>Asia</i>	10 119.9	376.8	641.3	401.8
China (excludes SARs and Taiwan)	3 695.4	82.3	6.3	15.8
Iran	1 826.4	8.2	210.2	136.2
Turkey	1 547.2	155.6	361.9	226.6
<i>Europe</i>	3 292.8	1 304.0	120.1	94.8
Italy	1 268.3	504.1	—	0.3
Spain	307.7	112.7	1.1	0.8
Greece	263.4	90.8	76.7	32.8
<i>Oceania</i>	85.0	52.0	30.1	6.6
Australia (b)	85.0	51.8	30.1	6.6
World total	18 371.8	3 513.5	1 240.5	714.8

— nil or rounded to zero (including null cells)

(a) The selection of country is based on the top two contributors to each category.

(b) This table contains details for Australia as reported by Office International de la Vigne et du Vin (O.I.V.). Other tables in this publication contain revised figures for Australia as reported by the ABS.

Source: Office International de la Vigne et du Vin (O.I.V.) 2008.

<i>Region (a)</i>	<i>Wine</i> million L	<i>Table grapes</i> '000 t	<i>Dried grapes</i> '000 t
<i>Africa</i>	213.7	6.5	19.5
Angola	75.1	—	—
South Africa	18.2	0.9	3.3
Morocco	6.5	4.1	6.5
Mauritius	1.7	1.5	0.3
Algeria	—	—	6.9
<i>America</i>	1 164.9	863.3	109.4
United States of America	705.2	538.9	24.4
Canada	280.9	185.2	31.8
<i>Asia</i>	342.1	406.4	124.1
Japan	158.5	11.0	30.4
China (excludes SARs and Taiwan)	54.0	180.8	20.7
United Arab Emirates	6.9	—	25.0
Saudi Arabia	—	31.1	8.5
<i>Europe</i>	5 935.7	1 910.2	334.7
Germany	1 326.2	356.2	74.7
United Kingdom	1 172.7	246.3	113.2
<i>Oceania</i>	72.2	17.6	29.1
New Zealand	35.9	11.4	7.7
Australia^(b)	22.1	6.2	21.3
World total	7 728.6	3 204.0	749.4

— nil or rounded to zero (including null cells)

(a) The selection of country is based on the top two contributors to each category.

(b) This table contains details for Australia as reported by Office International de la Vigne et du Vin (O.I.V.). Other tables in this publication contain revised figures for Australia as reported by the ABS.

Source: Office International de la Vigne et du Vin (O.I.V.) 2008.

EXPLANATORY NOTES

INTRODUCTION

1 This publication presents final estimates from the ABS collections: Inventories of Australian Wine and Brandy, 2007–08; Wine and Spirit Production, 2007–08; Wine Statistics, 2007–08 and Vineyards, 2008. Not all data from these collections are published here. Some further data are available for a charge, on application to the ABS.

2 This publication is a summary of statistics on grape and wine production and related activities collected by the ABS and from other sources. Some of the data used in this publication were obtained from various ABS collections for which publications with appropriate Explanatory Notes are already available. The bibliography contains a list of these publications. However, much of the data are only available in this publication and the following notes are provided to assist users.

3 The Viticulture tables replace the previous publication *Viticulture, Australia* (cat. no. 7310.0) and contain information on area of vines and production of red and white grapes for the 2008 season. The continuing collection of varietal data is supported by Australia's grape-growers and winemakers and the Australian government through the Grape and Wine Research and Development Corporation.

4 Differences exist between the grape production intended for winemaking reported by grape growers in the viticulture collection and the quantity of fresh grapes crushed by winemakers reported in the Wine and Spirit Production Collection. Differences in the collection methodologies, as outlined below, mean some difference should always be apparent between the series.

SCOPE AND COVERAGE OF VITICULTURE SURVEY

5 Viticultural statistics relate to the year in which the harvest occurred and are derived from information obtained in a collection of all known growers.

6 Prior to the 1999 collection, an exercise was undertaken to increase the number of known growers included in the collection. The improved coverage, of over 1,000 growers, means that the data presented for 1999 and later years are not directly comparable with data for previous years.

7 The scope of the 2008 collection is based on establishments undertaking vineyards activity.

8 Tasmanian data are collected in partnership with the *Department of Primary Industries and Water*. The scope of the collected data is the same as for other states.

9 Viticultural statistics are presented on an Australian Geographical Indications basis in this issue. The Geographical Indications are official descriptions of Australian wine zones, regions and sub-regions which are defined in the *Australian Wine and Brandy Corporation Act, 1980*. The zones and regions listed in the following table were provided to the ABS by the Australian Wine and Brandy Corporation. The list includes those regions which had been determined at the time of the Vineyards 2008 Survey.

10 For more detail on Australian Geographical Indications including maps of the zones and regions contact the Australian Wine and Brandy Corporation web site <<http://www.wineaustralia.com.au>>.

EXPLANATORY NOTES *continued*

AUSTRALIAN GEOGRAPHICAL INDICATIONS

Zone – Region

NEW SOUTH WALES

Big Rivers – Murray Darling (NSW), Perricoota, Riverina, Swan Hill (NSW), Other
Central Ranges – Cowra, Mudgee, Orange, Other
Hunter Valley – Hunter, Other
Northern Rivers – Hastings River, Other
Northern Slopes – New England
South Coast – Shoalhaven Coast, Southern Highlands, Other
Southern New South Wales – Canberra District, Gundagai, Hilltops, Tumbarumba, Other
Western Plains

VICTORIA

Central Victoria – Bendigo, Goulburn Valley, Heathcote, Strathbogie Ranges, Upper Goulburn, Other
Gippsland
North East Victoria – Alpine Valleys, Beechworth, Glenrowan, Rutherglen, Other
North West Victoria – Murray Darling (Vic.), Swan Hill (Vic.), Other
Port Phillip – Geelong, Macedon Ranges, Mornington Peninsula, Sunbury, Yarra Valley, Other
Western Victoria – Grampians, Henty, Pyrenees, Other

QUEENSLAND

Queensland – Granite Belt, South Burnett, Other

SOUTH AUSTRALIA

Barossa – Barossa Valley, Eden Valley, Other
Far North – Southern Flinders Ranges, Other
Fleurieu – Currency Creek, Kangaroo Island, Langhorne Creek, McLaren Vale, Southern Fleurieu, Other
Limestone Coast – Coonawarra, Mount Benson, Padthaway, Robe, Wrattontully, Other
Lower Murray – Riverland, Other
Mount Lofty Ranges – Adelaide Hills, Adelaide Plains, Clare Valley, Other
The Peninsulas

WESTERN AUSTRALIA

Central Western Australia
Eastern Plains, Inland and North of Western Australia
Greater Perth – Peel, Perth Hills, Swan Districts, Other
South West Australia – Blackwood Valley, Geographe, Great Southern, Manjimup, Margaret River, Pemberton, Other
West Australian South East Coastal

TASMANIA

Tasmania

NORTHERN TERRITORY

Northern Territory

AUSTRALIAN CAPITAL TERRITORY

Australian Capital Territory

EXPLANATORY NOTES *continued*

SCOPE AND COVERAGE OF WINE SURVEYS

11 Winemakers who crush more than 400 tonnes of grapes are included in the Wine and Spirit Production Survey. Wine production data are collected from these winemakers on a winery (location) basis to allow for state and regional data output. The grapes crushed by these wineries includes grapes owned by others and crushed on a commission or contract basis, often for wine producers who do not have their own crushing facilities. These wineries account for approximately 98% of total crushings by all winemakers crushing 50 or more tonnes of fresh grapes. Limited information on the quantity of grapes crushed and domestic wine sales are also obtained from wineries crushing between 50 and 400 tonnes. These data are collected on a winery (location) basis in the Wine Statistics Survey. The main purpose for this supplementary collection is to establish the scope and coverage of both the main production collection and the monthly wine sales collection.

12 Winemakers who crush more than 400 tonnes of grapes and have domestic wine sales of 250,000 litres or more in either of the two previous years are included in the Inventories of Australian Wine and Brandy Survey. These details on inventories of Australian beverage wine by wine type are collected at 30 June. For those winemakers that have sales less than 250,000 litres and have a grape crush of 400 tonnes or more, a freestanding set of inventory questions have been included in the Wine and Spirit Production Survey.

13 All inventories data are collected on an Australia-wide basis only and state figures are therefore not available. Inventories data collected from 1996 include all Australian-produced wines owned by these winemakers and held anywhere in Australia. In years previous to 1996, inventories included only those Australian-produced wines held by winemakers on any of their own premises, regardless of ownership. This change in the measurement of inventories means that data for 1996 and later are not directly comparable with earlier years.

14 The number of winemakers who fall within the scope of the wine inventories collection may vary from year to year as sales vary and individual wineries are included in, or excluded from, the wine sales collection. It is possible that inventories data may vary slightly each year as new wineries, with either large or small inventories, come into the scope of the collection. In particular, the published (i.e. closing) inventories figures for any one year may not equate with the opening inventories for the following year.

15 The wine content of products consisting of a mixture of wine and fruit juice, commonly known as 'coolers', is included in the appropriate wine category of the wine from which it is made, which is generally table wine.

PRICE INDEXES

16 The Sales by manufacturers index consists of three components: 'Domestic' represents the price manufacturers receive for wines manufactured for domestic consumption; 'Export' represents the price manufacturers receive for wines that are exported and are priced on a 'free on board' (f.o.b.) basis at the main Australian ports of export; and, 'Total wine' which represents the combined index of Domestic and Export. The valuation basis for these indexes is basic prices, defined as the amount received by the producer exclusive of any taxes on products and transport and trade margins. Refer *Producer Price Indexes, Australia* (cat. no. 6427.0), unpublished data and *International Trade Price Indexes, Australia* (cat. no. 6457.0), unpublished data.

17 The Consumer index for 'Wine' is the Consumer Price Index (CPI) for wine, while the 'All groups' index is the All groups CPI. Refer *Consumer Price Index, Australia* (cat. no. 6401.0).

ACKNOWLEDGMENT

18 ABS publications draw extensively on information provided freely by individuals, businesses, governments and other organisations. Their continued cooperation is very much appreciated: without it, the wide range of statistics published by the ABS would

EXPLANATORY NOTES *continued*

not be available. Information received by the ABS is treated in strict confidence as required by the *Census and Statistics Act 1905*.

ABS PUBLICATIONS

19 Current publications and other products released by the ABS are available from the ABS web site <<http://www.abs.gov.au>>. The ABS also issues a daily Release Advice on the web site which details products to be released in the week ahead. The ABS may have other relevant data available on request. Inquiries should be made to the National Information and Referral Service on 1300 135 070.

GLOSSARY

Beverage wine	Table, sparkling and fortified wine produced for direct consumption and not for distillation.
Brandy	The spirit obtained by the distillation of wine in such a manner as to ensure that the spirit possesses the taste, aroma and other characteristics generally attributed to brandy, in accordance with the requirements set out in the Schedule to this Standard.
De-alcoholised wine	Normally fermented wine in which the alcohol has been removed and which retains all other components.
Distillation wine	Wine used for the purpose of distillation into grape spirit.
Domestic sales	All sales of Australian produced wine by winemakers within the scope of the <i>Sales of Australian Wine by Winemakers</i> survey, whether they be wholesale or retail sales, or bulk sales to other wineries outside of the scope of the survey. Excluded are inter-winery sales, sales where the wine will be exported, sales to other winemakers with on-site crushing facilities, sales for ship and aircraft stores, sales of imported wine and the volume of imported wine blended with Australian wine sold domestically.
Exports	Exports of wine to overseas ports including sales made by exporters and wine producers.
Feints and low wine	Parts of the distillate which are not useable.
Fortified wine	Wine to which grape spirit has been added, thereby adding alcoholic strength and precluding further fermentation. Fortified wine must contain at least 150 millilitres/litre and not more than 200 millilitres/litre of ethanol at 20° Centigrade.
Grafted/grafting	The connection of two pieces of living plant tissue, so that they unite and grow as one plant.
Grape spirit	Alcohol spirit of vinous origin used in fortification or as a base for grape flavoured spirits. The spirit is obtained from the distillation of wine, by-products of winemaking or the fermented liquor of a mash of dried grapes and contains methanol in a proportion not exceeding 3 grams per litre at 20° Centigrade of the ethanol content.
Imports cleared for home consumption	Imported goods brought into the country for consumption or further processing, but excluding goods imported with the reasonable expectation of re-export within a limited time.
Intended planting	The area of vines, reported on the ABS Vineyards collection form, grape growers intend to plant or graft after the current harvest, but before the next harvest.
Low alcohol wine	Wine in which the alcohol content has been deliberately reduced or wine which has been produced with a lower alcohol level using either dilution or partial fermentation.
Marc	The residue of grape skins and seeds after the juice has been extracted.
Table and other grapes	This category refers to grape production that is not used for either winemaking or drying.
Table wine	A product of the complete or partial fermentation of fresh grapes or products derived solely from grapes.
Sparkling wine	The product of complete or partial fermentation of wine with contained sugars that has become surcharged with carbon dioxide.
Unfermented grape juice	A sweet, clear, non-alcoholic liquid. Winemakers use the term to refer to must which has undergone clarification and stabilisation.
Unfortified wine	Table or sparkling wine which must contain at least 80 millilitres/litre of ethanol at 20° Centigrade. Unfortified wines rely solely on fermentation for their alcoholic strength.

BIBLIOGRAPHY

ABS PUBLICATIONS

Apparent Consumption of Alcohol, Australia, cat. no. 4307.0.55.001.

Consumer Price Index, Australia, cat. no. 6401.0.

Household Expenditure Survey, Australia: Detailed Expenditure Items, 2003–04,
cat. no. 6530.0.

International Merchandise Trade, Australia, cat. no. 5422.0.

International Trade Price Indexes, Australia, cat. no. 6457.0.

Producer Price Indexes, Australia, cat. no. 6427.0.

Sales of Australian Wine and Brandy by Winemakers, cat. no. 8504.0.

ABS SURVEYS AND DATABASES

Export Price Index.

Import Price Index.

International Trade database.

Inventories of Australian Wine and Brandy, 30 June 2008.

Sales of Australian Wine by Winemakers.

Vineyards, 2008.

Wine and Spirit Production, 2007–08.

Wine Statistics, 2007–08.

NON-ABS SOURCES

The State of Vitiviniculture in the World and the Statistical Information in 2005, Office
International de la Vigne et du Vin, Paris.

FOR MORE INFORMATION . . .

INTERNET **www.abs.gov.au** the ABS website is the best place for data from our publications and information about the ABS.

INFORMATION AND REFERRAL SERVICE

Our consultants can help you access the full range of information published by the ABS that is available free of charge from our website. Information tailored to your needs can also be requested as a 'user pays' service. Specialists are on hand to help you with analytical or methodological advice.

PHONE 1300 135 070

EMAIL client.services@abs.gov.au

FAX 1300 135 211

POST Client Services, ABS, GPO Box 796, Sydney NSW 2001

FREE ACCESS TO STATISTICS

All statistics on the ABS website can be downloaded free of charge.

WEB ADDRESS www.abs.gov.au